

# Turkish Journal of Hematology

The Official Journal of the Turkish Society of Hematology

## ■■■■■■■■ PROCEEDINGS

Alvaro Urbano Ispizua, Barcelona, Spain

Andreas Engert, Cologne, Germany

Anna Schuh, Oxford, UK

Anne Quinquenel, Reims, France

Christian Chabannon, Marseille, France

Eva Kimby, Stockholm, Sweden

Gert Ossenkoppele, Amsterdam, The Netherlands

Koen Van Besien, New York, USA

Piers Patten, London, UK

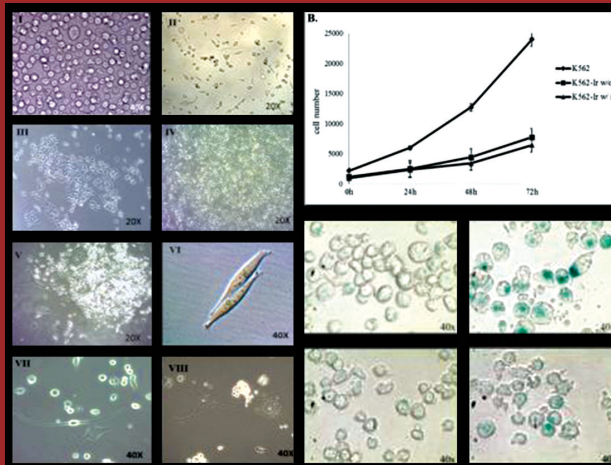
Safa Barış, Istanbul, Turkey

Tomasz Sacha, Krakow, Poland

## ■■■■■■■■ ABSTRACTS

ORAL PRESENTATIONS

POSTER PRESENTATIONS



Cover Picture:

Zeynep Yüce, Seda Baykal Köse,  
Öykü Gönül Geyik, Ahmet Sinan  
Yavuz, Eda Açıkgöz, Halil Ateş,  
Uğur Sezerman, Güner Hayri Özsan

An Adaptive Phenotypic Shift Leads  
to TKI Resistance by Acquisition of  
Leukemic Stem Cell-Like Properties in  
CML Cells





### Editor-in-Chief

**Reyhan Küçükkaya**  
İstanbul, Turkey  
rkucukkaya@hotmail.com

### Associate Editors

**A. Emre Eşkazan**  
İstanbul University Cerrahpaşa Faculty of  
Medicine, İstanbul, Turkey

**Ayşegül Ünüvar**  
İstanbul, Turkey  
aysegulu@hotmail.com

**Cengiz Beyan**  
Ufuk University, Ankara, Turkey  
cengizbeyan@hotmail.com

**Hale Ören**  
Dokuz Eylül University, İzmir, Turkey  
hale.oren@deu.edu.tr

**İbrahim C. Haznedaroğlu**  
Hacettepe University, Ankara, Turkey  
haznedar@yahoo.com

**M. Cem Ar**  
İstanbul University-Cerrahpaşa, Cerrahpaşa  
Faculty of Medicine, Department of Internal  
Diseases, Division of Hematology, Turkey  
mccemar68@yahoo.com

**Selami Koçak Toprak**  
Ankara University, Ankara, Turkey  
sktoprak@yahoo.com

**Semra Paydaş**  
Çukurova University, Adana, Turkey  
sepay@cu.edu.tr

**Şule Ünal**  
Hacettepe University, Ankara, Turkey

### Assistant Editors

**Ali İrfan Emre Tekgündüz**  
Dr. A. Yurtaslan Ankara Oncology Training  
and Research Hospital, Ankara, Turkey

**Claudio Cerchione**  
University of Naples Federico II Napoli,  
Campania, Italy

**Elif Ünal İnce**  
Ankara University, Ankara, Turkey

**İnci Alacacıoğlu**  
Dokuz Eylül University, İzmir, Turkey

**Müge Sayitoğlu**  
İstanbul University, İstanbul, Turkey

**Nil Güler**  
Ondokuz Mayıs University, Samsun, Turkey

**Olga Meltem Akay**  
Koç University, İstanbul, Turkey

**Veysel Sabri Hançer**  
İstinye University, İstanbul, Turkey

**Zühre Kaya**  
Gazi University, Ankara, Turkey

### International Review Board

Nejat Akar  
Görgün Akpek  
Serhan Alkan  
Çiğdem Altay  
Koen van Besien  
Ayhan Çavdar  
M. Sıraç Dilber  
Ahmet Doğan  
Peter Dreger  
Thierry Facon  
Jawed Fareed  
Gösta Gahrton  
Dieter Hoelzer  
Marilyn Manco-Johnson  
Andreas Josting  
Emin Kansu  
Winfried Kern  
Nigel Key  
Korgün Koral  
Abdullah Kutlar  
Luca Malcovati  
Robert Marcus  
Jean Pierre Marie  
Ghulam Mufti  
Gerassimos A. Pangalis  
Antonio Piga  
Ananda Prasad  
Jacob M. Rowe  
Jens-Ulrich Rüffer  
Norbert Schmitz  
Orhan Sezer  
Anna Sureda  
Ayalew Tefferi  
Nükhet Tüzüner  
Catherine Verfaillie  
Srdan Verstovsek  
Claudio Viscoli

TOBB Economy Technical University Hospital, Ankara, Turkey  
Maryland School of Medicine, Baltimore, USA  
Cedars-Sinai Medical Center, USA

Ankara, Turkey  
Chicago Medical Center University, Chicago, USA  
Ankara, Turkey

Karolinska University, Stockholm, Sweden  
Mayo Clinic Saint Marys Hospital, USA  
Heidelberg University, Heidelberg, Germany  
Lille University, Lille, France

Loyola University, Maywood, USA  
Karolinska University Hospital, Stockholm, Sweden  
Frankfurt University, Frankfurt, Germany

Colorado Health Sciences University, USA  
University Hospital Cologne, Cologne, Germany  
Hacettepe University, Ankara, Turkey

Albert Ludwigs University, Germany  
University of North Carolina School of Medicine, NC, USA  
Southwestern Medical Center, Texas, USA

Georgia Health Sciences University, Augusta, USA  
Pavia Medical School University, Pavia, Italy  
Kings College Hospital, London, UK

Pierre et Marie Curie University, Paris, France  
King's Hospital, London, UK  
Athens University, Athens, Greece

Torino University, Torino, Italy  
Wayne State University School of Medicine, Detroit, USA  
Rambam Medical Center, Haifa, Israel

University of Köln, Germany  
AK St Georg, Hamburg, Germany  
Memorial Şişli Hospital, İstanbul, Turkey

Santa Creu i Sant Pau Hospital, Barcelona, Spain  
Mayo Clinic, Rochester, Minnesota, USA  
İstanbul Cerrahpaşa University, İstanbul, Turkey

University of Minnesota, Minnesota, USA  
The University of Texas MD Anderson Cancer Center, Houston, USA  
San Martino University, Genoa, Italy

### Past Editors

Erich Frank  
Orhan Ulutin  
Hamdi Akan  
Aytemiz Gürgey

### Senior Advisory Board

Yücel Tangün  
Osman İlhan  
Muhit Özcan  
Teoman Soysal  
Ahmet Muzaffer Demir

### Language Editor

Leslie Demir

### Statistic Editor

Hülya Ellidokuz

### Editorial Office

İpek Durusu  
Bengü Timoçin



## Contact Information

Editorial Correspondence should be addressed to Dr. Reyhan Küçükkaya  
E-mail : rkucukkaya@hotmail.com

## All Inquiries Should be Addressed to

### TURKISH JOURNAL OF HEMATOLOGY

Address : Turan Güneş Bulv. İlkbahar Mah. Fahreddin Paşa Sokağı (eski 613. Sok.) No: 8 06550 Çankaya, Ankara / Turkey  
Phone : +90 312 490 98 97  
Fax : +90 312 490 98 68

E-mail : info@tjh.com.tr

E-ISSN: 1308-5263

## Publishing Manager

Muhlis Cem Ar

## Management Address

Türk Hematoloji Derneği  
Turan Güneş Bulv. İlkbahar Mah. Fahreddin Paşa Sokağı (eski 613. Sok.)  
No: 8 06550 Çankaya, Ankara / Turkey

## Online Manuscript Submission

<http://mc.manuscriptcentral.com/tjh>

## Web page

[www.tjh.com.tr](http://www.tjh.com.tr)

## Owner on Behalf of the Turkish Society of Hematology

Güner Hayri Özsan

## Publishing House

Miki Matbaacılık San. ve Tic. Ltd. Şti.  
Matbaacılar Sitesi 1516/1 Cad., No. 27 İvedik / ANKARA  
T. 0.312. 395 2128  
T. 0.312. 394 1863  
[www.miki.com.tr](http://www.miki.com.tr)

## Publication Date

29.04.2019

## Cover Picture

Zeynep Yüce, Seda Baykal Köse, Öykü Gönül Geyik, Ahmet Sinan  
Yavuz, Eda Açıkgöz, Halil Ateş, Uğur Sezerman, Güner Hayri Özsan

*An Adaptive Phenotypic Shift Leads to TKI Resistance by  
Acquisition of Leukemic Stem Cell-Like Properties in CML Cells*

International scientific journal published quarterly.

The Turkish Journal of Hematology is published by the commercial enterprise  
of the Turkish Society of Hematology with Decision Number 6 issued by the  
Society on 7 October 2008.



## AIMS AND SCOPE

The Turkish Journal of Hematology is published quarterly (March, June, September, and December) by the Turkish Society of Hematology. It is an independent, non-profit peer-reviewed international English-language periodical encompassing subjects relevant to hematology.

The Editorial Board of The Turkish Journal of Hematology adheres to the principles of the World Association of Medical Editors (WAME), International Council of Medical Journal Editors (ICMJE), Committee on Publication Ethics (COPE), Consolidated Standards of Reporting Trials (CONSORT) and Strengthening the Reporting of Observational Studies in Epidemiology (STROBE).

The aim of The Turkish Journal of Hematology is to publish original hematological research of the highest scientific quality and clinical relevance. Additionally, educational material, reviews on basic developments, editorial short notes, images in hematology, and letters from hematology specialists and clinicians covering their experience and comments on hematology and related medical fields as well as social subjects are published. As of December 2015, The Turkish Journal of Hematology does not accept case reports. Important new findings or data about interesting hematological cases may be submitted as a brief report. General practitioners interested in hematology and internal medicine specialists are among our target audience, and The Turkish Journal of Hematology aims to publish according to their needs. The Turkish Journal of Hematology is indexed, as follows:

- PubMed Medline
- PubMed Central
- Science Citation Index Expanded
- EMBASE
- Scopus
- CINAHL
- Gale/Cengage Learning
- EBSCO
- DOAJ
- ProQuest
- Index Copernicus
- Tübitak/Ulakbim Turkish Medical Database
- Turk Medline
- Hinari
- QUARE
- ARDI
- GOALI

**Impact Factor: 0.650**

### Open Access Policy

Turkish Journal of Hematology is an Open Access journal. This journal provides immediate open access to its content on the principle that making research freely available to the public supports a greater global exchange of knowledge.

Open Access Policy is based on the rules of the Budapest Open Access Initiative (BOAI) <http://www.budapestopenaccessinitiative.org/>.

### Subscription Information

The Turkish Journal of Hematology is published electronically only as of 2019. Therefore, subscriptions are not necessary. All published volumes are available in full text free-of-charge online at [www.tjh.com.tr](http://www.tjh.com.tr).

Address: İlkbahar Mah., Turan Güneş Bulvarı, 613 Sok., No: 8, Çankaya, Ankara, Turkey

Telephone: +90 312 490 98 97

Fax: +90 312 490 98 68

Online Manuscript Submission: <http://mc.manuscriptcentral.com/tjh>

Web page: [www.tjh.com.tr](http://www.tjh.com.tr)

E-mail: [info@tjh.com.tr](mailto:info@tjh.com.tr)

### Permissions

Requests for permission to reproduce published material should be sent to the editorial office.

Editor: Professor Dr. Reyhan Küçükkaya

Address: Turan Güneş Bulv. İlkbahar Mah. Fahrettin Paşa Sokağı (Eski 613. Sokak)

No: 8, 06550 Çankaya, Ankara, Turkey

Telephone: +90 312 490 98 97

Fax: +90 312 490 98 68

Online Manuscript Submission: <http://mc.manuscriptcentral.com/tjh>

Web page: [www.tjh.com.tr](http://www.tjh.com.tr)

E-mail: [info@tjh.com.tr](mailto:info@tjh.com.tr)

### Publisher

BYT Bilimsel Araştırmalar Basın Yayın ve Tanıtım Ltd. Şti.

Ziya Gökalp Cad. 30/31, 06420 Kızılay, Ankara

Tel: 0312 431 30 62

Faks: 0312 431 36 02

[www.bayt.com.tr](http://www.bayt.com.tr)

[info@bayt.com.tr](mailto:info@bayt.com.tr)

### Instructions for Authors

Instructions for authors are published in the journal and at [www.tjh.com.tr](http://www.tjh.com.tr)

### Material Disclaimer

Authors are responsible for the manuscripts they publish in The Turkish Journal of Hematology. The editor, editorial board, and publisher do not accept any responsibility for published manuscripts.

If you use a table or figure (or some data in a table or figure) from another source, cite the source directly in the figure or table legend.

### Editorial Policy

Following receipt of each manuscript, a checklist is completed by the Editorial Assistant. The Editorial Assistant checks that each manuscript contains all required components and adheres to the author guidelines, after which time it will be forwarded to the Editor in Chief. Following the Editor in Chief's evaluation, each manuscript is forwarded to the Associate Editor, who in turn assigns reviewers. Generally, all manuscripts will be reviewed by at least three reviewers selected by the Associate Editor, based on their relevant expertise. Associate editor could be assigned as a reviewer along with the reviewers. After the reviewing process, all manuscripts are evaluated in the Editorial Board Meeting. Turkish Journal of Hematology's editor and Editorial Board members are active researchers. It is possible that they would desire to submit their manuscript to the Turkish Journal of Hematology. This may be creating a conflict of interest. These manuscripts will not be evaluated by the submitting editor(s). The review process will be managed and decisions made by editor-in-chief who will act independently. In some situation, this process will be overseen by an outside independent expert in reviewing submissions from editors.



## TURKISH JOURNAL OF HEMATOLOGY INSTRUCTIONS FOR AUTHORS

The Turkish Journal of Hematology accepts invited review articles, research articles, brief reports, letters to the editor, and hematological images that are relevant to the scope of hematology, on the condition that they have not been previously published elsewhere. Basic science manuscripts, such as randomized, cohort, cross-sectional, and case-control studies, are given preference. All manuscripts are subject to editorial revision to ensure they conform to the style adopted by the journal. There is a double-blind reviewing system. Review articles are solicited by the Editor-in-Chief. Authors wishing to submit an unsolicited review article should contact the Editor-in-Chief prior to submission in order to screen the proposed topic for relevance and priority.

The Turkish Journal of Hematology does not charge any article submission or processing charges.

Manuscripts should be prepared according to ICMJE guidelines (<http://www.icmje.org/>). Original manuscripts require a structured abstract. Label each section of the structured abstract with the appropriate subheading (Objective, Materials and Methods, Results, and Conclusion). Letters to the editor do not require an abstract. Research or project support should be acknowledged as a footnote on the title page. Technical and other assistance should be provided on the title page.

### Original Manuscripts

#### Title Page

**Title:** The title should provide important information regarding the manuscript's content. The title must specify that the study is a cohort study, cross-sectional study, case-control study, or randomized study (i.e. Cao GY, Li KX, Jin PF, Yue XY, Yang C, Hu X. Comparative bioavailability of ferrous succinate tablet formulations without correction for baseline circadian changes in iron concentration in healthy Chinese male subjects: A single-dose, randomized, 2-period crossover study. *Clin Ther* 2011;33:2054-2059).

The title page should include the authors' names, degrees, and institutional/professional affiliations and a short title, abbreviations, keywords, financial disclosure statement, and conflict of interest statement. If a manuscript includes authors from more than one institution, each author's name should be followed by a superscript number that corresponds to their institution, which is listed separately. Please provide contact information for the corresponding author, including name, e-mail address, and telephone and fax numbers.

**Running Head:** The running head should not be more than 40 characters, including spaces, and should be located at the bottom of the title page.

**Word Count:** A word count for the manuscript, excluding abstract, acknowledgments, figure and table legends, and references, should be provided and should not exceed 2500 words. The word count for the abstract should not exceed 300 words.

**Conflict of Interest Statement:** To prevent potential conflicts of interest from being overlooked, this statement must be included in each manuscript. In case there are conflicts of interest, every author should complete the ICMJE general declaration form, which can be obtained at [http://www.icmje.org/downloads/coi\\_disclosure.zip](http://www.icmje.org/downloads/coi_disclosure.zip)

**Abstract and Keywords:** The second page should include an abstract that does not exceed 300 words. For manuscripts sent by authors in Turkey, a title and abstract in Turkish are also required. As most readers read the abstract first, it is critically important. Moreover, as various electronic databases integrate only abstracts into their index, important findings should be presented in the abstract.

**Objective:** The abstract should state the objective (the purpose of the study and hypothesis) and summarize the rationale for the study.

**Materials and Methods:** Important methods should be written respectively.

**Results:** Important findings and results should be provided here.

**Conclusion:** The study's new and important findings should be highlighted and interpreted.

Other types of manuscripts, such as reviews, brief reports, and editorials, will be published according to uniform requirements. Provide 3-10 keywords below the abstract to assist indexers. Use terms from the Index Medicus Medical Subject Headings List (for randomized studies a CONSORT abstract should be provided: <http://www.consort-statement.org>).

**Introduction:** The introduction should include an overview of the relevant literature presented in summary form (one page), and whatever remains interesting, unique, problematic, relevant, or unknown about the topic must be specified. The introduction should conclude with the rationale for the study, its design, and its objective(s).

**Materials and Methods:** Clearly describe the selection of observational or experimental participants, such as patients, laboratory animals, and controls, including inclusion and exclusion criteria and a description of the source population. Identify the methods and procedures in sufficient detail to allow other researchers to reproduce your results. Provide references to established methods (including statistical methods), provide references to brief modified methods, and provide the rationale for using them and an evaluation of their limitations. Identify all drugs and chemicals used, including generic names, doses, and routes of administration. The section should include only information that was available at the time the plan or protocol for the study was devised ([https://www.strobe-statement.org/fileadmin/Strobe/uploads/checklists/STROBE\\_checklist\\_v4\\_combined.pdf](https://www.strobe-statement.org/fileadmin/Strobe/uploads/checklists/STROBE_checklist_v4_combined.pdf)).

**Statistics:** Describe the statistical methods used in enough detail to enable a knowledgeable reader with access to the original data to verify the reported results. Statistically important data should be given in the



text, tables, and figures. Provide details about randomization, describe treatment complications, provide the number of observations, and specify all computer programs used.

**Results:** Present your results in logical sequence in the text, tables, and figures. Do not present all the data provided in the tables and/or figures in the text; emphasize and/or summarize only important findings, results, and observations in the text. For clinical studies provide the number of samples, cases, and controls included in the study. Discrepancies between the planned number and obtained number of participants should be explained. Comparisons and statistically important values (i.e. p-value and confidence interval) should be provided.

**Discussion:** This section should include a discussion of the data. New and important findings/results and the conclusions they lead to should be emphasized. Link the conclusions with the goals of the study, but avoid unqualified statements and conclusions not completely supported by the data. Do not repeat the findings/results in detail; important findings/results should be compared with those of similar studies in the literature, along with a summarization. In other words, similarities or differences in the obtained findings/results with those previously reported should be discussed.

**Study Limitations:** Limitations of the study should be detailed. In addition, an evaluation of the implications of the obtained findings/results for future research should be outlined.

**Conclusion:** The conclusion of the study should be highlighted.

### References

Cite references in the text, tables, and figures with numbers in square brackets. Number references consecutively according to the order in which they first appear in the text. Journal titles should be abbreviated according to the style used in Index Medicus (consult List of Journals Indexed in Index Medicus). Include among the references any paper accepted, but not yet published, designating the journal followed by "in press".

#### Examples of References:

##### 1. List all authors

Deeg HJ, O'Donnel M, Tolar J. Optimization of conditioning for marrow transplantation from unrelated donors for patients with aplastic anemia after failure of immunosuppressive therapy. *Blood* 2006;108:1485-1491.

##### 2. Organization as author

Royal Marsden Hospital Bone Marrow Transplantation Team. Failure of syngeneic bone marrow graft without preconditioning in post-hepatitis marrow aplasia. *Lancet* 1977;2:742-744.

##### 3. Book

Wintrobe MM. *Clinical Hematology*, 5th ed. Philadelphia, Lea & Febiger, 1961.

##### 4. Book Chapter

Perutz MF. Molecular anatomy and physiology of hemoglobin. In: Steinberg MH, Forget BG, Higs DR, Nagel RI, (eds). *Disorders of Hemoglobin:*

*Genetics, Pathophysiology, Clinical Management.* New York, Cambridge University Press, 2000.

##### 5. Abstract

Drachman JG, Griffin JH, Kaushansky K. The c-Mpl ligand (thrombopoietin) stimulates tyrosine phosphorylation. *Blood* 1994;84:390a (abstract).

##### 6. Letter to the Editor

Rao PN, Hayworth HR, Carroll AJ, Bowden DW, Pettenati MJ. Further definition of 20q deletion in myeloid leukemia using fluorescence in situ hybridization. *Blood* 1994;84:2821-2823.

##### 7. Supplement

Alter BP. Fanconi's anemia, transplantation, and cancer. *Pediatr Transplant* 2005;9(Suppl 7):81-86.

### Brief Reports

**Abstract length:** Not to exceed 150 words.

**Article length:** Not to exceed 1200 words.

**Introduction:** State the purpose and summarize the rationale for the study.

**Materials and Methods:** Clearly describe the selection of the observational or experimental participants. Identify the methods and procedures in sufficient detail. Provide references to established methods (including statistical methods), provide references to brief modified methods, and provide the rationale for their use and an evaluation of their limitations. Identify all drugs and chemicals used, including generic names, doses, and routes of administration.

**Statistics:** Describe the statistical methods used in enough detail to enable a knowledgeable reader with access to the original data to verify the reported findings/results. Provide details about randomization, describe treatment complications, provide the number of observations, and specify all computer programs used.

**Results:** Present the findings/results in a logical sequence in the text, tables, and figures. Do not repeat all the findings/results in the tables and figures in the text; emphasize and/or summarize only those that are most important.

**Discussion:** Highlight the new and important findings/results of the study and the conclusions they lead to. Link the conclusions with the goals of the study, but avoid unqualified statements and conclusions not completely supported by your data.

### Invited Review Articles

**Abstract length:** Not to exceed 300 words.

**Article length:** Not to exceed 4000 words.

Review articles should not include more than 100 references. Reviews should include a conclusion, in which a new hypothesis or study about the subject may be posited. Do not publish methods for literature search or level of evidence. Authors who will prepare review articles should already have published research articles on the relevant subject. The study's new and important findings should be highlighted and interpreted in the Conclusion section. There should be a maximum of two authors for review articles.



### **Perspectives in Hematology**

"Perspectives" are articles discussing significant topics relevant to hematology. They are more personal than a Review Article. Authors wishing to submit a Perspective in Hematology article should contact the Editor in Chief prior to submission in order to screen the proposed topic for relevance and priority. Articles submitted for "Perspectives in Hematology" must advance the hot subjects of experimental and/or clinical hematology beyond the articles previously published or in press in TJH. Perspective papers should meet the restrictive criteria of TJH regarding unique scientific and/or educational value, which will impact and enhance clinical hematology practice or the diagnostic understanding of blood diseases. Priority will be assigned to such manuscripts based upon the prominence, significance, and timeliness of the content. The submitting author must already be an expert with a recognized significant published scientific experience in the specific field related to the "Perspectives" article.

Abstract length: Not to exceed 150 words.

Article length: Not to exceed 1000 words.

References: Should not include more than 50 references

### **Images in Hematology**

Article length: Not to exceed 200 words.

Authors can submit for consideration illustrations or photos that are interesting, instructive, and visually attractive, along with a few lines of explanatory text and references. Images in Hematology can include no more than 200 words of text, 5 references, and 3 figures or tables. No abstract, discussion, or conclusion is required, but please include a brief title.

### **Letters to the Editor**

Article length: Not to exceed 500 words.

Letters can include no more than 500 words of text, 5-10 references, and 1 figure or table. No abstract is required, but please include a brief title. The total number is usually limited to a maximum of five authors for a letter to the editor.

### **Tables**

Supply each table in a separate file. Number tables according to the order in which they appear in the text, and supply a brief caption for each. Give each column a short or abbreviated heading. Write explanatory statistical measures of variation, such as standard deviation or standard error of mean. Be sure that each table is cited in the text.

### **Figures**

Figures should be professionally drawn and/or photographed. Authors should number figures according to the order in which they appear in the text. Figures include graphs, charts, photographs, and illustrations. Each figure should be accompanied by a legend that does not exceed 50 words. Use abbreviations only if they have been introduced in the text. Authors are also required to provide the level of magnification for histological

slides. Explain the internal scale and identify the staining method used. Figures should be submitted as separate files, not in the text file. High-resolution image files are not preferred for initial submission as the file sizes may be too large. The total file size of the PDF for peer review should not exceed 5 MB.

### **Authorship**

Each author should have participated sufficiently in the work to assume public responsibility for the content. Any portion of a manuscript that is critical to its main conclusions must be the responsibility of at least one author.

### **Contributor's Statement**

All submissions should contain a contributor's statement page. Each statement should contain substantial contributions to idea and design, acquisition of data, and analysis and interpretation of findings. All persons designated as an author should qualify for authorship, and all those that qualify should be listed. Each author should have participated sufficiently in the work to take responsibility for appropriate portions of the text.

### **Acknowledgments**

Acknowledge support received from individuals, organizations, grants, corporations, and any other source. For work involving a biomedical product or potential product partially or wholly supported by corporate funding, a note stating, "This study was financially supported (in part) with funds provided by (company name) to (authors' initials)", must be included. Grant support, if received, needs to be stated and the specific granting institutions' names and grant numbers provided when applicable.

Authors are expected to disclose on the title page any commercial or other associations that might pose a conflict of interest in connection with the submitted manuscript. All funding sources that supported the work and the institutional and/or corporate affiliations of the authors should be acknowledged on the title page.

### **Ethics**

When reporting experiments conducted with humans indicate that the procedures were in accordance with ethical standards set forth by the committee that oversees human subject research. Approval of research protocols by the relevant ethics committee, in accordance with international agreements (Helsinki Declaration of 1975, revised 2013 available at <https://www.wma.net/policies-post/wma-declaration-of-helsinki-ethical-principles-for-medical-research-involving-human-subjects/>), is required for all experimental, clinical, and drug studies. Patient names, initials, and hospital identification numbers should not be used. Manuscripts reporting the results of experimental investigations conducted with humans must state that the study protocol received institutional review board approval and that the participants provided informed consent.





Non-compliance with scientific accuracy is not in accord with scientific ethics. Plagiarism: To re-publish, in whole or in part, the contents of another author's publication as one's own without providing a reference. Fabrication: To publish data and findings/results that do not exist. Duplication: Use of data from another publication, which includes re-publishing a manuscript in different languages. Salami slicing: To create more than one publication by dividing the results of a study unnecessarily. We disapprove of such unethical practices as plagiarism, fabrication, duplication, and salami slicing, as well as efforts to influence the review process with such practices as gifting authorship, inappropriate acknowledgments, and references. Additionally, authors must respect participants' right to privacy.

On the other hand, short abstracts published in congress books that do not exceed 400 words and present data of preliminary research, and those that are presented in an electronic environment, are not considered as previously published work. Authors in such a situation must declare this status on the first page of the manuscript and in the cover letter.

(The COPE flowchart is available at <http://publicationethics.org>.)

We use iThenticate to screen all submissions for plagiarism before publication.

#### **Conditions of Publication**

All authors are required to affirm the following statements before their manuscript is considered: 1. The manuscript is being submitted only to The Turkish Journal of Hematology; 2. The manuscript will not be submitted elsewhere while under consideration by The Turkish Journal of Hematology; 3. The manuscript has not been published elsewhere, and should it be published in The Turkish Journal of Hematology it will not be published elsewhere without the permission of the editors (these restrictions do not apply to abstracts or to press reports for presentations at scientific meetings); 4. All authors are responsible for the manuscript's content; 5. All authors participated in the study concept and design, analysis and interpretation of the data, and drafting or revising of the manuscript and have approved the manuscript as submitted. In addition, all authors are required to disclose any professional affiliation, financial agreement, or other involvement with any company whose product figures prominently in the submitted manuscript.

Authors of accepted manuscripts will receive electronic page proofs and are responsible for proofreading and checking the entire article within two days. Failure to return the proof in two days will delay publication. If the authors cannot be reached by email or telephone within two weeks, the manuscript will be rejected and will not be published in the journal.

#### **Copyright**

At the time of submission all authors will receive instructions for submitting an online copyright form. No manuscript will be considered for review until all authors have completed their copyright form. Please note, it is our practice not to accept copyright forms via fax, e-mail, or postal service unless there is a problem with the online author accounts that cannot be resolved. Every effort should be made to use the online

copyright system. Corresponding authors can log in to the submission system at any time to check the status of any co-author's copyright form. All accepted manuscripts become the permanent property of The Turkish Journal of Hematology and may not be published elsewhere, in whole or in part, without written permission.

Note: We cannot accept any copyright form that has been altered, revised, amended, or otherwise changed. Our original copyright form must be used as is.

#### **Units of Measurement**

Measurements should be reported using the metric system, according to the International System of Units (SI). Consult the SI Unit Conversion Guide, New England Journal of Medicine Books, 1992.

An extensive list of conversion factors can be found at <https://www.nist.gov/sites/default/files/documents/pml/wmd/metric/SP1038.pdf>. For more details, see [http://www.amamanualofstyle.com/oso/public/jama/si\\_conversion\\_table.html](http://www.amamanualofstyle.com/oso/public/jama/si_conversion_table.html).

#### **Abbreviations and Symbols**

Use only standard abbreviations. Avoid abbreviations in the title and abstract. The full term for an abbreviation should precede its first use in the text, unless it is a standard abbreviation. All acronyms used in the text should be expanded at first mention, followed by the abbreviation in parentheses; thereafter the acronym only should appear in the text. Acronyms may be used in the abstract if they occur 3 or more times therein, but must be reintroduced in the body of the text. Generally, abbreviations should be limited to those defined in the AMA Manual of Style, current edition. A list of each abbreviation (and the corresponding full term) used in the manuscript must be provided on the title page.

#### **Online Manuscript Submission Process**

The Turkish Journal of Hematology uses submission software powered by ScholarOne Manuscripts. The website for submissions to The Turkish Journal of Hematology is <http://mc.manuscriptcentral.com/tjh>. This system is quick and convenient, both for authors and reviewers.

#### **Setting Up an Account**

New users to the submission site will need to register and enter their account details before they can submit a manuscript. Log in, or click the "Create Account" button if you are a first-time user. To create a new account: After clicking the "Create Account" button, enter your name and e-mail address, and then click the "Next" button. Your e-mail address is very important. Enter your institution and address information, as appropriate, and then click the "Next" Button. Enter a user ID and password of your choice, select your area of expertise, and then click the "Finish" button.

If you have an account, but have forgotten your log-in details, go to "Password Help" on the journal's online submission system and enter your e-mail address. The system will send you an automatic user ID and a new temporary password.

Full instructions and support are available on the site, and a user ID and password can be obtained during your first visit. Full support for



authors is provided. Each page has a "Get Help Now" icon that connects directly to the online support system. Contact the journal administrator with any questions about submitting your manuscript to the journal (info@tjh.com.tr). For ScholarOne Manuscripts customer support, click on the "Get Help Now" link on the top right-hand corner of every page on the site.

### **The Electronic Submission Process**

Log in to your author center. Once you have logged in, click the "Submit a Manuscript" link in the menu bar. Enter the appropriate data and answer the questions. You may copy and paste directly from your manuscript. Click the "Next" button on each screen to save your work and advance to the next screen.

### **Upload Files**

Click on the "Browse" button and locate the file on your computer. Select the appropriate designation for each file in the drop-down menu next to the "Browse" button. When you have selected all the files you want to upload, click the "Upload Files" button. Review your submission before sending to the journal. Click the "Submit" button when you are finished reviewing. You can use ScholarOne Manuscripts at any time to check the status of your submission. The journal's editorial office will inform you by e-mail once a decision has been made. After your manuscript has been submitted, a checklist will then be completed by the Editorial Assistant. The Editorial Assistant will check that the manuscript contains all required components and adheres to the author guidelines. Once the Editorial Assistant is satisfied with the manuscript it will be forwarded to the Senior Editor, who will assign an editor and reviewers.

### **The Review Process**

Each manuscript submitted to The Turkish Journal of Hematology is subject to an initial review by the editorial office in order to determine if it is aligned with the journal's aims and scope and complies with essential requirements. Manuscripts sent for peer review will be assigned to one of the journal's associate editors that has expertise relevant to the manuscript's content. All accepted manuscripts are sent to a statistical and English language editor before publishing. Once papers have been reviewed, the reviewers' comments are sent to the Editor, who will then make a preliminary decision on the paper. At this stage, based on the feedback from reviewers, manuscripts can be accepted or rejected, or revisions can be recommended. Following initial peer-review, articles judged worthy of further consideration often require revision. Revised manuscripts generally must be received within 3 months of the date of the initial decision. Extensions must be requested from the Associate Editor at least 2 weeks before the 3-month revision deadline expires; The Turkish Journal of Hematology will reject manuscripts that are not received within the 3-month revision deadline. Manuscripts with extensive revision recommendations will be sent for further review (usually by the same reviewers) upon their re-submission. When a manuscript is finally

accepted for publication, the Technical Editor undertakes a final edit and a marked-up copy will be e-mailed to the corresponding author for review and any final adjustments.

### **Submission of Revised Papers**

When revising a manuscript based on the reviewers' and Editor's feedback, please insert all changed text in red. Please do not use track changes, as this feature can make reading difficult. To submit revised manuscripts, please log in to your author center at ScholarOne Manuscripts. Your manuscript will be stored under "Manuscripts with Decisions". Please click on the "Create a Revision" link located to the right of the manuscript title. A revised manuscript number will be created for you; you will then need to click on the "Continue Submission" button. You will then be guided through a submission process very similar to that for new manuscripts. You will be able to amend any details you wish. At stage 6 ("File Upload"), please delete the file for your original manuscript and upload the revised version. Additionally, please upload an anonymous cover letter, preferably in table format, including a point-by-point response to the reviews' revision recommendations. You will then need to review your paper as a PDF and click the "Submit" button. Your revised manuscript will have the same ID number as the original version, but with the addition of an R and a number at the end, for example, TJH-2011-0001 for an original and TJH-2011-0001.R1, indicating a first revision; subsequent revisions will end with R2, R3, and so on. Please do not submit a revised manuscript as a new paper, as revised manuscripts are processed differently. If you click on the "Create a Revision" button and receive a message stating that the revision option has expired, please contact the Editorial Assistant at info@tjh.com.tr to reactivate the option.

### **English Language and Statistical Editing**

All manuscripts are professionally edited by an English language editor prior to publication. After papers have been accepted for publication, manuscript files are forwarded to the statistical and English language editors before publishing. Editors will make changes to the manuscript to ensure it adheres to TJH requirements. Significant changes or concerns are referred to corresponding authors for editing.

### **Online Early**

The Turkish Journal of Hematology publishes abstracts of accepted manuscripts online in advance of their publication. Once an accepted manuscript has been edited, the authors have submitted any final corrections, and all changes have been incorporated, the manuscript will be published online. At that time the manuscript will receive a Digital Object Identifier (DOI) number. Both forms can be found at www.tjh.com.tr. Authors of accepted manuscripts will receive electronic page proofs directly from the printer and are responsible for proofreading and checking the entire manuscript, including tables, figures, and references. Page proofs must be returned within 48 hours to avoid delays in publication.



## CONTENTS

- A-X** ORGANIZING COMMITTEE  
**A-XI** COURSE PROGRAM  
**A-XIII** SCIENTIFIC PROGRAM  
**A-XVII** ORAL PRESENTATIONS LIST

### PROCEEDINGS

- 3** Basic Immunology-Humoral  
*Safa BARIS*
- 4** Regulatory Issues and Standards for CAR-T Cell Administration  
*Christian CHABANNON*
- 6** Treatment with CARTs in Malignant Hemopathies  
*A. Urbano SPIZUA*
- 8** The Emerging Role of MRD in AML  
*Gert OSSENKOPPELE*
- 10** Choosing First, and Second Line Therapies in the Era of Generic TKI  
*Tomasz SACHA*
- 12** Clinical Applications of Prognostic Markers in Chronic Lymphocytic Leukemia  
*Piers PATTEN*
- 14** The Management of Chronic Lymphocytic Leukaemia (CLL) is Undergoing Rapid Change  
*Anna SCHUH*
- 15** Treatment of Relapsed Chronic Lymphocytic Leukemia  
*Anne QUINQUENEL*
- 17** First-Line Treatment of Hodgkin Lymphoma  
*Andreas ENGERT*
- 19** Nodular Lymphocyte-Predominant Hodgkin Lymphoma  
*Dennis A. EICHENAUER*
- 21** Follicular Lymphoma – Focus on Therapy  
*Eva KIMBY*
- 26** Cellular Therapy for Follicular Lymphoma  
*Koen van BESIEN*

### ABSTRACTS

- 31** ORAL PRESENTATIONS  
**47** POSTER PRESENTATIONS  
**83** AUTHORS INDEX