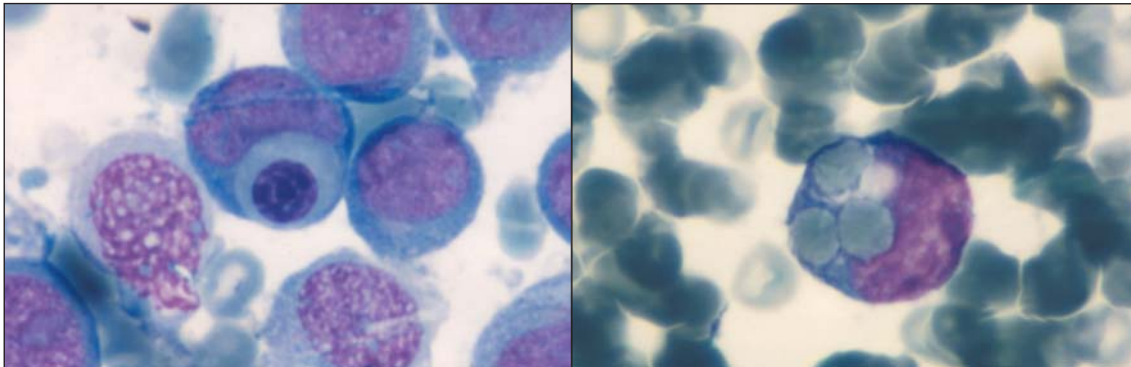
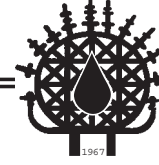


Images in Haematology

Edited by: Hamdi Akan M.D.



A 50 years-old woman presented with fatigue and easy bruising. Physical examination revealed nodular infiltration of the skin. Trombocytopenia and high level of lactic dehydrogenase was found. Overt disseminated intravascular coagulation (DIC) was also present. Bone marrow aspirate showed monoblastic leukemia with erythrophagocytosis by the monoblasts (bone marrow aspirate x 400). The skin biopsy also revealed leukemic infiltration. Cytogenetics showed monosomy 19. Following induction chemotherapy and intensive blood product support at day 20, the marrow aspirate showed refractory disease. Although reinduction chemotherapy with high dose Ara-C was initiated, she died after acute respiratory distress syndrome. Morphology with erythrophagocytosis, extramedullary infiltration and DIC makes the prognosis very poor.

Güçhan ALANOĞLU¹, Çağatay ARSLAN², Nermin KARAHAN³

¹ Department of Haematology, Suleyman Demirel University School of Medicine,

² Department of Internal Medicine, Suleyman Demirel University School of Medicine,

³ Department of Pathology, Suleyman Demirel University School of Medicine,
Isparta, TURKEY