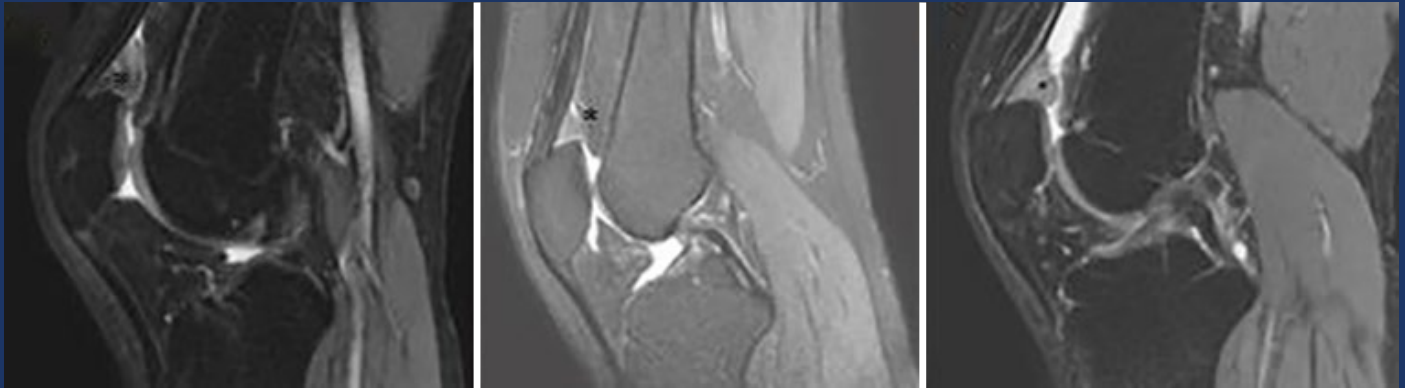


COMPREHENSIVE MEDICINE

Formerly İstanbul Kanuni Sultan Süleyman Tıp Dergisi

Volume 15 Issue 2 March Year 2023



Analysis of Clinical Outcomes of the ARDS Patients in the Intensive Care Unit

Analysis of the Knowledge Level of the Surgical Residents Regarding the Pre-Operative Assessment of the Adult Elective Non-Cardiac Surgery Patients with Specific Clinical Conditions

Does Pre-operative TSH Level Affect Pathological Findings in Papillary Thyroid Carcinoma?

Evaluation of Hepatitis B and Hepatitis C Seroprevalence in People Living with HIV

Procedural Sedation Protocols with or without Ketamine in Pediatric Gastrointestinal Endoscopy: A Retrospective Cohort Study

Immunological Risk Monitoring in Patients with High Immunologic Risk and Its Effects on Clinical Outcomes

COMPREHENSIVE MEDICINE

Formerly İstanbul Kanuni Sultan Süleyman Tıp Dergisi

Volume 15 Issue 2 March Year 2023

On behalf of University of Health Sciences,
Kanuni Sultan Süleyman Training and Research
Hospital Head Physician

Assoc. Prof. Ali Kocataş

Editor-in-Chief

Assoc. Prof. Mustafa Kadihasanoğlu

Department of Urology, İstanbul University-Cerrahpaşa,
Cerrahpaşa Faculty of Medicine, İstanbul, Türkiye
kadihasanoglu@gmail.com

Associate Editors

Assoc. Prof. Ayça Sultan Şahin

Department of Anesthesiology and Reanimation, İstanbul Kanuni
Sultan Süleyman Training and Research Hospital, İstanbul, Türkiye
aycasultan@gmail.com

Assoc. Prof. Serkan Doğan

Department of Emergency Medicine, İstanbul Kanuni Sultan
Süleyman Training and Research Hospital, İstanbul, Türkiye
sercem2003@hotmail.com

Section Editors

Basic Sciences

Assoc. Prof. Arzu İrvem

Department of Microbiology and Clinical Microbiology Clinic,
İstanbul Kanuni Sultan Süleyman Training and
Research Hospital, İstanbul, Türkiye
arzuirvem@gmail.com

Internal Sciences

Assoc. Prof. Murat Akarsu

Department of Internal Medicine Clinic, İstanbul Kanuni Sultan
Süleyman Training and Research Hospital, İstanbul, Türkiye
muratakarsu79@gmail.com

Surgical Sciences

Assoc. Prof. Yasin Kara

Department of General Surgery, İstanbul Kanuni Sultan Süleyman
Training and Research Hospital, İstanbul, Türkiye
yasinkara32@windowslive.com

Children Health and Diseases

Assoc. Prof. Himmet Haluk Akar

Department of Child Immunology and Allergy Clinic, İstanbul
Kanuni Sultan Süleyman Training and Research Hospital,
İstanbul, Türkiye
himmetakar@gmail.com

Gynecology and Obstetrics

Assoc. Prof. Pınar Yalçın Bahat

Department of Gynecology and Obstetrics Clinic, İstanbul Kanuni
Sultan Süleyman Training and Research Hospital, İstanbul, Türkiye
dr_pinaryalcin@hotmail.com

Neurological Sciences (Neurosurgery-Neurology-Psychiatry)

Assoc. Prof. Semra Işık

Department of Neurosurgery, İstanbul Kanuni Sultan Süleyman
Training and Research Hospital, İstanbul, Türkiye
drsemraisik@gmail.com

Statistical Editor

Türker Demirtakan, MD

Department of Emergency Medicine, İstanbul Kanuni
Sultan Süleyman Training and Research Hospital,
İstanbul, Türkiye

COMPREHENSIVE MEDICINE

Formerly İstanbul Kanuni Sultan Süleyman Tıp Dergisi

AIMS AND SCOPE

Comprehensive Medicine is the official publication of Kanuni Sultan Süleyman Training and Research Hospital. It is published regularly, four times a year, in January, April, July, October as hardcopy and an electronic journal.

The journal was published by Bakırköy Obstetrics and Gynecology Hospital in 1990s.

JOPP (gynecology obstetrics, pediatric and pediatric surgery) has reached the status of the journal of peer-reviewed journal in 2009. And it is publishing as Comprehensive Medicine since 2014.

The journal publishes original research articles including gynecology, obstetric, pediatrics, pediatric surgery and basic medical sciences, case reports, reviews and announcements of panels and congresses.

The language of the journal is Turkish and English. It is a peer-reviewed journal and does not charge any fee from readers or authors. All published articles are open access.

The aim of Comprehensive Medicine is to provide students, who are educated in the field of medicine in all fields of medicine, and researchers to all physicians who are in the field of health and information about disease treatment and prevention methods.

In addition, by conducting an objective evaluation within the framework of the ethical rules of the journal, the consultant aims to enable the reviewers to transfer their experiences to the authors, to give the author a perspective on how to write a scientific article, and to contribute to the elimination of the scientific value of the articles published in our country.

Comprehensive Medicine is to publish original researches on international level qualified, continuous and general medicine and periodically evaluated at the highest level both clinically and scientifically according to the konusunda double-blind, system for the consultant and writer. In addition to this, they include collections covering basic innovations about education, letters to the editor, and case reports.

Our journal was published by Bakırköy Obstetrics and Gynecology Hospital in 1990s.

Formerly: JOPP (Gynecology Obstetrics Pediatrics and Pediatric Surgery Journal) | ISSN: 1308-6715

Advisory Board: https://ikssmedj.org/advisory_board

Writing Guide: <https://ikssmedj.org/instructions-to-authors>



Advertisement / Publisher Corresponding Address

For requests concerning advertising, please contact the Publisher:

Kare Yayıncılık İletişim Hizmetleri Tic. Ltd. Şti.

Address: Göztepe Mah. Fahrettin Kerim Gökay Cad. No: 200 D: 2 Göztepe, Kadıköy, İstanbul-Türkiye

Telephone: +90 (216) 550 61 11 - **Fax:** +90 (216) 550 61 12

Web page: www.kareyayincilik.com - **E-mail:** kare@karepb.com

Online Publication Date: March 2023 ISSN: 2148-273X E-ISSN: 2667-7458

International periodical journal published four times in a year.

This journal has been indexed in TÜBİTAK ULAKBİM TR Dizin, Türk Atıf Dizini (Turkish Citation Index) since September of 2011 and EBSCO since September of 2020.

Open Access Policy

This journal provides immediate open access to its content on the principle that making research freely available to the public supports a greater global exchange of knowledge.

Open Access Policy is based on the rules of the Budapest Open Access Initiative (BOAI) <http://www.budapestopenaccessinitiative.org/>. By "open access" to peer-reviewed research literature, we mean its free availability on the public internet, permitting any users to read, download, copy, distribute, print, search, or link to the full texts of these articles, crawl them for indexing, pass them as data to software, or use them for any other lawful purpose, without financial, legal, or technical barriers other than those inseparable from gaining access to the internet itself. The only constraint on reproduction and distribution, and the only role for copyright in this domain, should be to give authors control over the integrity of their work and the right to be properly acknowledged and cited.

As publisher of the Comprehensive Medicine, Kare Publishing House does not demand any subscription fee, publication fee or similar payment for the access into electronic resources.

Permission Requests

For all published articles, Comprehensive Medicine accepts the "Creative Commons Attribution License" (Attribution 4.0 International CC BY)

This license lets others distribute, remix, adapt, and build upon your work, even commercially, as long as they credit you for the original creation. This is the most accommodating of licenses offered. Recommended for maximum dissemination and use of licensed materials.

Open access is an approach that reinforces interdisciplinary development and encourages cooperation between different disciplines. For this reason, Comprehensive Medicine Journal contributes to its field by offering more access to its articles and a more transparent review process.

COMPREHENSIVE MEDICINE

Formerly İstanbul Kanuni Sultan Süleyman Tıp Dergisi

CONTENTS

Volume 15 Issue 2 March Year 2023

RESEARCH ARTICLES

- 91** Analysis of Clinical Outcomes of the ARDS Patients in the Intensive Care Unit
Ebru Kaya, Nazan Yıldız, Ayça Sultan Şahin
- 96** Analysis of the Knowledge Level of the Surgical Residents Regarding the Pre-Operative Assessment of the Adult Elective Non-Cardiac Surgery Patients with Specific Clinical Conditions
Gözde Altun, Murat Aksun, Ayça Sultan Şahin
- 102** Does Pre-operative TSH Level Affect Pathological Findings in Papillary Thyroid Carcinoma?
Erkan Somuncu, Nezihe Berrin Dodur Önalın
- 107** Evaluation of Hepatitis B and Hepatitis C Seroprevalence in People Living with HIV
Ayşe Serra Özel, Lütfiye Nilsun Altunal, Merve Çağlar Özer, Şevval Özen Aksakal
- 112** Procedural Sedation Protocols with or without Ketamine in Pediatric Gastrointestinal Endoscopy: A Retrospective Cohort Study
Naime Yalçın, Nurdan Kamilçelevi, Ayça Sultan Şahin, Barış Sandal, Abdurrahim Derbent, Ziya Salihoğlu
- 120** Immunological Risk Monitoring in Patients with High Immunologic Risk and Its Effects on Clinical Outcomes
Zuhal Atan Uçar, Ayşe Sinangil Demiroğlu, Mustafa Emre Özçilsal, Yener Koç, Alaattin Yıldız, Emin Barış Akın
- 125** Diagnostic Value of the Systemic Immune-Inflammation Index in Diagnosing Acute Cholecystitis
Kemal Şener, Adem Çakır, Hüseyin Kılavuz, Serkan Doğan, Ramazan Güven, Semih Korkut
- 132** The Effect of the Full Closure Process on the Patient Density in the Emergency Department
Gökhan Yılmaz, Ahmet Uyanık, İsmail Aktaş, Murat Akıncı, Hasan Gazi Uyar
- 138** qSOFA Scores Versus SIRS Criteria and SOFA Scores for Sepsis in the Emergency Department; A Prospective, Observational, and Cohort Study
Hanife Bilgili, Fatih Çakmak, Afşın İpekci, Yonca Senem Akdeniz, Türker Demirtakan, İbrahim İkizceli
- 143** An Experimental Study for Ki67 in Papillary Thyroid Cancer: A Single-center Experience
Erkan Somuncu, Alper Koçbyık, Hakan Bölükbaşı, Yasin Kara, Mehmet Celal Kızılkaya, Mustafa Uygur Kalaycı
- 148** Clinical Significance of Quadriceps Fat Pad Edema: Its Relation with Anterior Knee Pain and Other Patellofemoral Joint Pathologies
Aysu Başak Özbacı, Cihan Kalkan
- 156** Healthcare Shift Workers' Sleep Quality, Daytime Sleepiness, and Circadian Preference
Alperen Kılıç, Serhat Koran, Mehmet Yücel Ağargün

REVIEWS

- 165** A Comprehensive Review for Refreshing the Crush Syndrome Knowledge After the Devastating Earthquake in Türkiye
Ramiz Yazıcı, Can İlçin, Talha Özsü, Türker Demirtakan, Utku Murat Kalafat, Serkan Doğan
- 171** Usage of Fibrinogen Concentrate in Postpartum Hemorrhage: Anesthesiology and Intensive Care Perspective
Ayça Sultan Şahin

LETTER TO THE EDITOR

- 175** Modified Thoracolumbar Intersfacial Plane Block in Inguinal Hernia Repairment
Engin İhsan Turan, Ayça Sultan Şahin