

## Percutaneous left atrial cardiac biopsy under multidetector computed tomography guidance

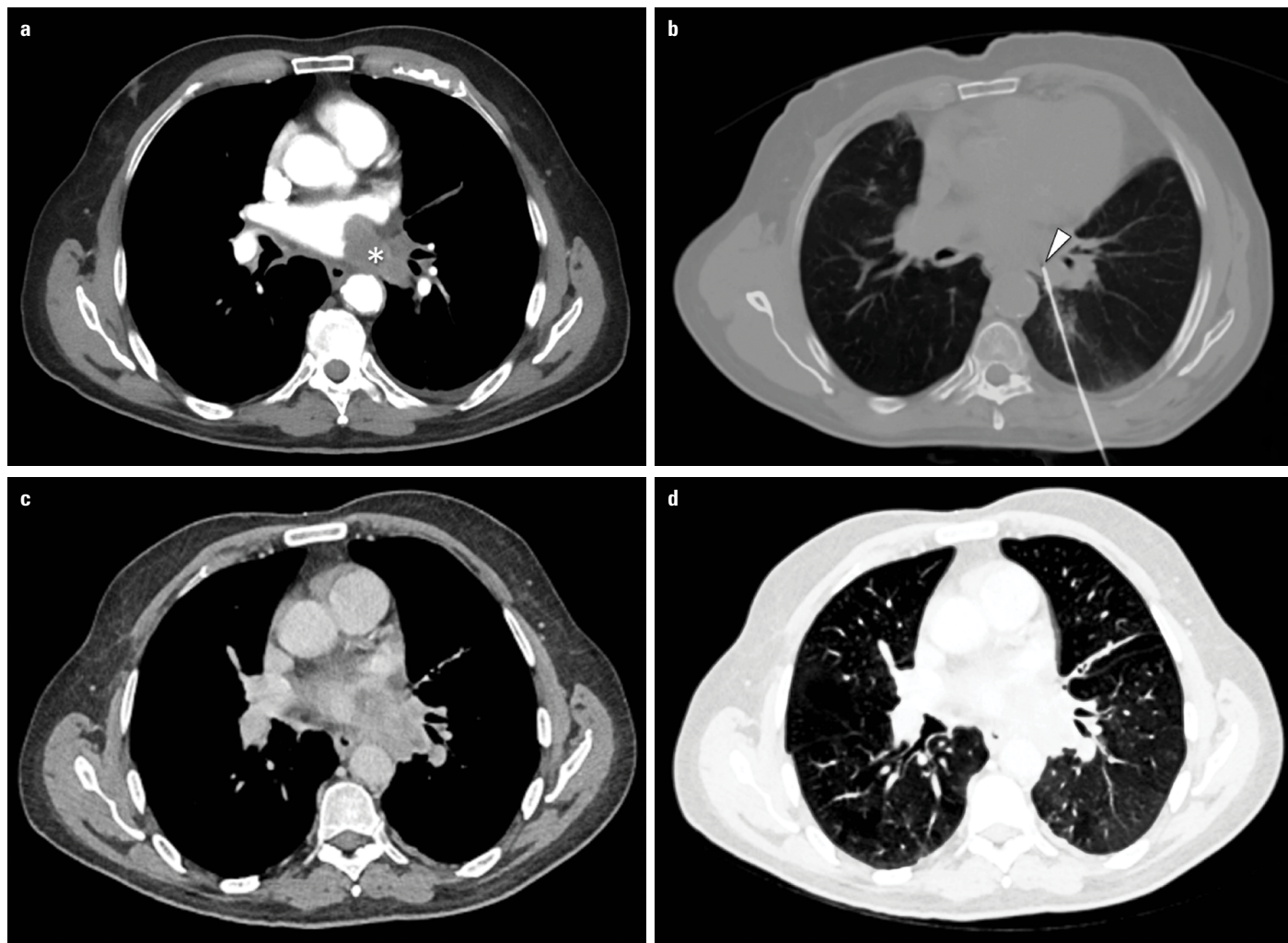
To the Editor,

We appreciated the paper of Yuze et al. (1) entitled "An unusual case of cardiac lymphoma diagnosed using computed tomography-guided percutaneous transthoracic biopsy." The authors clearly highlighted several techniques to obtain a biopsy specimen from a cardiac mass. Very few studies have been conducted using this technique in literature (1).

We report a case of left atrial cardiac mass, where percutaneous biopsy under multidetector computed tomography (MDCT)

guidance was decisive for the diagnosis and consequently for the type of treatment.

A 78-year-old man was evaluated in our hospital for cardiac congestion and had lost weight over the past 6 months. Thoraco-abdominal MDCT showed a cardiac mass at the posterior wall of the left atrium, with suspected left pulmonary hilum infiltration (Fig. 1a). Transbronchial biopsy at the left pulmonary hilum gave a negative result for cancer cells. After multidisciplinary discussions, the patient was a candidate for percutaneous approach biopsy. Under MDCT guidance, with the patient in prone position, a dorsal intercostal percutaneous transpulmonary access was done for biopsy of the left atrial cardiac mass (Fig. 1b). MDCT post-procedural control demonstrated absence of cardiac, mediastinal, and lung complications (Fig. 1c, 1d). Histopathological evaluation demonstrated an undifferentiated high-grade intimal sarcoma with a proliferative index (Ki67) of 25%. On immunohistochemical examination, tumor






**Figure 1.** (a) Contrast-enhanced multidetector computed tomography (MDCT) axial image of the thorax showing cardiac mass 4.2×2.1 cm at the level of the posterior wall of the left atrium (\*). Note the presence at the level of the left pulmonary hilum of dense tissue as a possible infiltrate. (b) MDCT guidance for dorsal intercostal percutaneous transpulmonary access. Note the tip of an 18-gauge histological needle biopsy (arrowhead) into the left atrial cardiac mass. Post biopsy contrast-enhanced MDCT axial image of the thorax with mediastinal (c) and lung (d) window showing absence of cardiac, mediastinal, and lung complications

cell expressed FLI-1 and CD31; but were negative for S100-antigen, CD34, CD45, SOX10, CK AE1/AE3, EMA, and desmin. Therefore, the patient was a candidate for radiation therapy.

Cardiac tumors are rare. Patient appropriate treatment for cardiac tumor depends on histological diagnosis and staging. Non-surgical cardiac mass biopsy evaluation can be done by transvascular (artery and vein) and percutaneous approach. Right cardiac biopsies are commonly performed through the venous access. Left cardiac biopsies are most commonly performed through the arterial access. Not all patients with left atrium lesions can undergo diagnostic and therapeutic surgeries.

Percutaneous CT guided cardiac biopsy procedures date back to the early 2000s (2, 3) particularly for the left atrial masses. Percutaneous thoracic imaging guided approach can be indicated in selected cases, with previous multidisciplinary discussions paying attention on the mass anatomical location, characteristics, and extension (1-4). In general, percutaneous transthoracic biopsy procedures may be useful in those cases where traditional approaches or methods have resulted in a possible technical failure or are too complicated. In conclusion, cardiac masses located in the posterior wall of the left atrium can be one of the cases where percutaneous imaging guided biopsy is indicated.

 **Umberto Geremia Rossi**,  **Anna Maria Ierardi**<sup>1</sup>,  
 **Maurizio Cariati**<sup>2</sup>

**Department of Radiological Area, Interventional Radiology Unit, Ente Ospedaliero Ospedali Galliera Hospital; Genova-Italy**

<sup>1</sup>**Department of Diagnostic Imaging, Radiology Unit, I.R.C.C.S. Cà Granda Foundation, Maggiore Policlinico Hospital; Milano-Italy**

<sup>2</sup>**Department of Diagnostic and Therapeutic Advanced Technology, Diagnostic and Interventional Radiology Unit Azienda Socio Sanitaria Territoriale Santi Paolo and Carlo Hospital; Milano-Italy**

## References

1. Yuce G, Coskun A. An unusual case of cardiac lymphoma diagnosed using computed tomography-guided percutaneous transthoracic biopsy. *Anatol J Cardiol* 2020; 24: 59-61. [[CrossRef](#)]
2. Daliri A, Oehring K, Moosdorf RG, Franke FE, Kalinowski M, Zahedi F, et al. Percutaneous left atrial cardiac biopsy with CT fluoroscopy guidance. *J Vasc Interv Radiol* 2007; 18: 909-13. [[CrossRef](#)]
3. Yamagami T, Kato T, Tanaka O, Hirota T, Ito K, Nishimura M, et al. Percutaneous needle biopsy under CT fluoroscopic guidance for cardiac tumor during continuous intravenous injection of contrast material. *J Vasc Interv Radiol* 2005; 16: 559-61. [[CrossRef](#)]
4. Rossi UG, Seitun S, Ferro C. MDCT-guided transthoracic needle aspiration biopsy of the lung using the transscapular approach. *Cardiovasc Intervent Radiol* 2011; 34: 184-7. [[CrossRef](#)]

**Address for Correspondence:** Umberto Geremia Rossi, MD,  
Department of Radiological Area,  
Interventional Radiology Unit,  
Ente Ospedaliero Ospedali Galliera Hospital;  
Genova-Italy

Phone: 00390105634154

E-mail: [umberto.rossi@galliera.it](mailto:umberto.rossi@galliera.it)

©Copyright 2021 by Turkish Society of Cardiology - Available online at [www.anatoljcardiol.com](http://www.anatoljcardiol.com)

DOI: [10.14744/AnatolJCardiol.2020.53840](https://doi.org/10.14744/AnatolJCardiol.2020.53840)



## Shock wave therapy in cardiology: A comment

To the Editor,

Cardiac shock wave therapy (CSWT) was developed based on lithotripsy in that it uses low-intensity shock waves to stimulate angiogenesis (1). Its therapeutic potential was first demonstrated in porcine models of chronic myocardial ischemia, acute infarction, and ischemia-reperfusion injury. Experimental studies have been short-termed, thus unable to provide information on potential late consequences, and only relatively small-scale studies found evidence supporting the clinical application of CSWT (1). Shock waves induce shear stress in tissues (1, 2). Some studies indicate that physical characteristics of CSWT partly overlap with those associated with damage. Shock waves with the flux density 0.09 mJ/mm<sup>2</sup> were used in (1). Approximately one-tenth of the total power used for lithotripsy is usually applied to the heart, which corresponds to the energy flux density ~0.09 mJ/mm<sup>2</sup> and peak pressure of 10 MPa (3). In comparison, shock waves with the peak pressure 10 MPa caused lung bleedings in dogs (4). Histological evidence of damage were observed in murine renal medulla following the shock wave impact with peak pressures 3–5 MPa; severe damage appeared after 15–20 MPa shocks (5). Ultrastructural damage can be histologically invisible. Abnormalities were seen by electron microscopy in rats after a shock wave impact with the energy flux density 0.1 mJ/mm<sup>2</sup>; the scores of myocardial ultrastructure damage in the CSWT vs. sham control groups were 2.42 and 1.39 correspondingly (p=0.103) (2). The peak pressure recommended by for the shock wave device used in Moscow has been around 10 MPa (6). In regard to mechanisms, immediate vasodilation has been ascribed to nitric oxide (NO) whose half-life in living tissues is several seconds, which means the NO-mediated action would not last long. The stimulation of angiogenesis is supposed to result from activation of the vascular endothelial growth factor (VEGF), which has an ambiguous role in ischemic heart disease as it can induce proliferation of fibroblasts and myofibroblasts, thus contributing to fibrosis. In coronary arteries, the smooth muscle proliferation due to VEGF may facilitate the growth of atherosclerotic plaques. Presumably, VEGF attracts inflammatory cells into the intima at different stages of atherogenesis (7, 8), which if enhanced might contribute to their instability. In conditions of atherosclerosis, elevated serum VEGF was associated with adverse cardiac events (8). Reported CSWT effects may be transient and reactive in their nature. The placebo effect may partially prompt subjective improvements. Additional impact upon cardiomyocytes, pre-damaged by ischemia, might contribute to apoptosis. Given the limited regeneration capacity, this may result in some degree of interstitial fibrosis. Evaluation of fibrosis by morphometry in the experimental material is technically possible. Other potential late consequences such as enhanced atherogenesis, angiogenesis in plaques, and their instability would be difficult to assess