

## HEPATOPROTECTIVE EFFECT OF CARNOSINE ON LIVER BIOCHEMICAL PARAMETERS IN CHRONIC ETHANOL INTOXICATED RAT

KAWTHER M. SOLIMAN\*  
MANAL A. HAMED\*  
SANAA A. ALI\*

*SUMMARY: The aim of the present study is to investigate the effect of ethanol and the action of carnosine treatment on certain liver parameters; enzymes, total proteins and glycogen in rats. These enzymes including Krebs cycle enzyme: succinate dehydrogenase (SDH); glycolytic enzymes: lactate dehydrogenase (LDH) and its isoenzymes; glycogenolytic metabolic machineries: glycogen phosphorylase, G-6-Pase and glycogen; hydrolytic enzymes: acid phosphatase (AP) and alkaline phosphatase (ALP); amino acid metabolic enzymes: aspartate aminotransferase (AST) and alanine aminotransferase (ALT) and nucleic acid catabolic enzyme: 5`-nucleotidase. The chronic ethanol-intoxicated rats showed a marked disturbance in all the parameters measured, indicating the toxic effect of ethanol by inducing oxidative stress on liver tissue. Administration of carnosine ameliorated the toxic effects of ethanol.*

*Key Words: Ethanol toxicity, Carnosine, Enzymes, Glycogen.*

### INTRODUCTION

Chronic alcoholism produces a wide spectrum of liver and other organ diseases depending on the amount and duration of alcohol intake. The liver affection ranges from fatty change to hepatitis and cirrhosis. Protein deficiency and enzyme activity depression were proved to be associated with alcoholic liver disease. Chronic liver disease in human is characterized by a fall in serum albumin concentration and changes of the enzyme activities (1, 2).

Oxidative stress is well recognized to be a key step in the pathogenesis of tissue injury by ethanol generating

reactive oxygen species (ROS) in many tissues and decreasing in the endogenous antioxidants as well as enhancement of lipid peroxidation process (3).

L-carnosine (beta-alanyl-L-histidine) is an active physiological dipeptide that is distributed naturally in several human tissues especially the skeletal muscle, cardiac muscle and the brain (4). Carnosine exhibits antioxidant actions (5) and inhibition of lipid peroxidation (6-8). In addition, it exerts anti-inflammatory activity presumably due to its antioxidant and antiglycation properties (7, 9).

The present work has been directed to study the effect of hepatocorrective effect of carnosine administration in rat liver against ethanol toxicity through estimation of lactate dehydrogenase (LDH; E.C.1.1.1.27) and its isoenzymes, succinate dehydrogenase (SDH; E.C.1.3. 99.1),

---

\*From Department of Medical Biochemistry, Faculty of Medicine, Cairo University and Department of Medicinal Chemistry, National Research Center, Dokki, Cairo, Egypt.

glucose-6-phosphatase, (G-6-pase; E.C.3.1.3.9), glycogen phosphorylase (E.C.2.4.1.1), acid phosphatase (AP; E.C.3.1.3.2), alkaline phosphatase (ALP; E.C.3.1. 3.1), aspartate aminotransferase (AST; E.C.2.6. 1.1), alanine aminotransferase (ALT; E.C. 2.6.1.2) and 5'-nucleotidase (E.C.3.1.3.5), total protein and glycogen.

## METHODS

### Chemicals

The chemicals used were of analr quality, products of Merck, Germany, Sigma, USA, and El Nasr Pharmaceutical Chemical Company, Egypt.

### Doses and route of administration

i- Ethyl alcohol was administered orally at a dose of 12 g/ kg body weight / day (10), where the ethyl alcohol (99.8%) was diluted using bidistilled water to 20% and the dose was equivalent to 1.3 ml/kg/day.

ii-Dipeptide carnosine was supplemented orally at a dose of 5 mg/kg body weight/day, dissolving in bidistilled water (7).

### Animals

Seventy male albino rats (*Rattus Norvigus* strain) of similar age and weight (120 g) were selected for this study. They were obtained from Animal House, Ophthalmic Institute, Giza, Egypt. Animals were kept in a controlled environment and were allowed free access of diet and water during the study.

### Experimental design

Animals were divided into seven groups, each of ten animals. Group 1: normal healthy controls. Group 2: ethanol intoxicated for 12 weeks. Group 3: withdrawal group (ethanol ingested for 12 weeks then left abstinent 2 weeks free). Group 4: L- carnosine-ethanol treated (during as that of ethanol ingestion) for 12 weeks. Group 5: L-carnosine-ethanol treated (received prophylactic L-carnosine for two weeks before starting ethanol ingestion for 12 weeks). Group 6: ethanol-carnosine treated (received L-carnosine for two weeks after 12 weeks of ethanol intoxication). Group 7: healthy carnosine supplemented.

### Preparation of tissue homogenates

i) Liver tissue was homogenized in normal physiological saline solution (0.9N NaCl) by a ratio 1:9 w/v. The homogenate was centrifuged for 5 minutes at 3000 x g at 4°C and the supernatant was used for estimation of succinate dehydrogenase, lactate dehydrogenase, glucose-6-phosphatase, acid phosphatase, 5' nucleotidase, aspartate aminotransferase, alanine aminotransferase and alkaline phosphatase and total protein content.

ii) Liver tissue was homogenized in 1:2 w/v of 100 mM maleate - NaOH buffer (pH 6.6) containing 20 mM NaF, 1 mM

EDTA, 0.5 mg/ml bovine serum albumin and 10 mM DL-Dithiothreitol. The supernatant obtained after centrifugation at 3000 x g at 4°C was used for estimation of glycogen phosphorylase.

iii) Liver tissue was homogenized in (0.01 M) tris-glycine buffer pH (8.3) by a ratio 1:9 w/v. The supernatant obtained after centrifugation at 3000 x g at 4°C for 5 minutes was used for the determination of LDH-isoenzyme, where 100 µg protein was applied to each gel.

iv) One gram of liver tissue was boiled in 5 ml 30% KOH for estimation of glycogen.

### Parameter assays

Enzyme activities were evaluated using end point assay methods, succinate dehydrogenase; Shelton and Rice (11). Lactate dehydrogenase; Babson and Babson (12). Lactate dehydrogenase isoenzymes; Dietz and Lubrano (13). G-6-Pase; Swanson (14). Glycogen phosphorylase; Hedrick and Fischer (15). Acid phosphatase; Wattaux and De Duve (16). 5' - nucleotidase; Bodansky and Schwartz (17). Alkaline phosphatase; Kind and King (18). AST and ALT; Reitman and Frankel (19). Total protein; Bradford (20). Glycogen; Nicholas *et al.* (21).

### Statistical analysis

Data are expressed as mean ± S.D. of ten rats in each group and statistically analyzed using analysis of variance (ANOVA) and least significant difference (LSD) post-hoc (SPSS Computer Program).

## RESULTS

Table 1 showed that ethanol ingestion recorded significant reductions in activities of SDH, LDH, ALP, AST, ALT. Ethanol intoxication activated two enzymes; AP and 5'-nucleotidase. The ethanol withdrawal (group 3), caused promotion changes in all these parameters to normal levels.

Carnosine-treatment for 12 weeks in conjunction with ethanol intoxication (group 4) presented lowered activities of all enzymes except two enzymes; AP and 5'-nucleotidase that were over the normal levels. Prophylactic 2 weeks-carnosine administration (group 5) presented promotion to normal level for SDH, while the others are decreased and 5'-nucleotidase activity was increased. The 2 weeks-carnosine administration after ethanol withdrawal (group 6) caused promotion changes in all these parameters to normal levels except 2 enzymes LDH and ALT, which remained low. The healthy carnosine (group 7) presented normal levels for all parameters.

Table 2 and Figure 1 showed that liver LDH-isoenzymes in the control animals exhibited variation in its sub-units, where LDH<sub>5</sub> was the most dominating showing the highest contribution value followed by LDH<sub>4</sub>. Ethanol administration caused significant reduction value of LDH<sub>5</sub>. In the withdrawal ethanol group, LDH<sub>5</sub> was still decreased, while LDH<sub>4</sub> was normalized. The 12 weeks-carnosine-ethanol groups recorded significant activation of LDH<sub>5</sub> compared to the ethanol group yet, it was still below the normal value. The 2 weeks-carnosine-ethanol groups, whether carnosine given before or after, presented increased activity of LDH<sub>5</sub> and decreased that of LDH<sub>4</sub>. However, the healthy carnosine group showed much higher activity of LDH<sub>5</sub> and decreased those of

LDH<sub>1</sub>, LDH<sub>2</sub>, LDH<sub>3</sub>, LDH<sub>4</sub> at the expense of LDH<sub>5</sub>.

Table 3 showed significant reduction in protein concentration of ethanol ingested rats and L-carnosine-ethanol treated rats (during the same period as that of ethanol ingestion), while it recorded high levels in groups received carnosine either before or after ethanol intoxication as well as ethanol withdrawal group. Glycogen phosphorylase recorded variable decreased activities of in all tested groups. G-6-Pase activity was inhibited in two groups: ethanol-intoxicated and intoxicated-12 weeks-carnosine animals. Liver glycogen concentrations were low in the two ethanol groups (intoxicated and intoxicated-2 weeks withdrawal) while it presented high levels in all groups receiving carnosine.

Table 1: Effect of ethanol and carnosine on liver enzymes in rats.

Enzymes	Control	Ethanol		Ethanol + Carnosine			Carnosine	Improvement %		
	Group 1	Group 2	Group 3	Group 4	Group 5	Group 6	Group 7	a	b	c
Succinate dehydrogenase	0.51 ± 0.03 (2,4)	0.37 ± 0.03 (1,3,5,6,7)	0.50 ± 0.01 (2,4)	0.39 ± 0.03 (1,3,5,6,7)	0.47 ± 0.03 (2,4)	0.48 ± 0.03 (2,4)	0.49 ± 0.03 (2,4)	3.92	19.60	21.56
Lactate dehydrogenase	83.88 ± 1.65 (2,4,5,6)	66.74 ± 0.62 (1,3,5,6,7)	81.77 ± 3.79 (2,4,5)	69.72 ± 1.65 (1,3,6,7)	73.48 ± 5.33 (1,2,3,6,7)	78.99 ± 4.97 (1,2,4,5)	80.64 ± 5.97 (2,4,5)	3.55	8.03	14.60
Aspartate aminotransferase	2.45 ± 0.22 (2,4,5)	1.38 ± 0.09 (1,3,5,6,7)	2.31 ± 0.14 (2,4,5)	1.60 ± 0.05 (1,3,5,6,7)	1.90 ± 0.43 (1,2,3,4,6,7)	2.21 ± 0.24 (2,4,5)	2.30 ± 0.20 (2,4,5)	8.97	21.22	33.8s
Alanine aminotransferase	1.80 ± 0.11 (2,3,4,5,6)	1.27 ± 0.11 (1,3,5,6,7)	1.59 ± 0.22 (1,2)	1.45 ± 0.07 (1,6,7)	1.61 ± 0.18 (1,2)	1.65 ± 0.19 (1,2,4)	1.64 ± 0.08 (2,4)	10.0	18.88	21.11
Alkaline phosphatase	9.71 ± 0.76 (2,4,5)	6.02 ± 0.71 (1,3,4,5,6,7)	9.33 ± 0.37 (2,4)	7.63 ± 0.45 (1,2,3,6,7)	8.34 ± 1.24 (1,2)	9.26 ± 0.65 (2,4)	9.00 ± 1.29 (2,4)	16.58	23.89	33.36
Acid phosphatase	0.42 ± 0.02 (2,4,5)	0.47 ± 0.03 (1,3, 5,6)	0.42 ± 0.01 (2,4,5)	0.46 ± 0.02 (1,3,6)	0.45 ± 0.02 (1,2,3,6)	0.43 ± 0.02 (2,4,5)	0.44 ± 0.06 (-)	2.38	4.76	9.52
5'-nucleotidase	0.63 ± 0.03 (2,4,5)	0.70 ± 0.03 (1,3,6,7)	0.64 ± 0.01 (2,4)	0.69 ± 0.02 (1,3)	0.68 ± 0.01 (1)	0.65 ± 0.02 (2)	0.65 ± 0.06 (-)	1.58	3.17	7.93

- Group 1: Normal healthy control,
- Group 2: 12 weeks ethanol,
- Group 3: 12 weeks ethanol +2 weeks withdrawal,
- Group 4: 12 weeks ethanol + carnosine,

- Group 5: 2 weeks carnosine +12 weeks ethanol,
- Group 6: 12 weeks ethanol + 2 weeks carnosine,
- Group 7: 12 weeks carnosine.

- Enzyme units: μmol/min/mg protein.

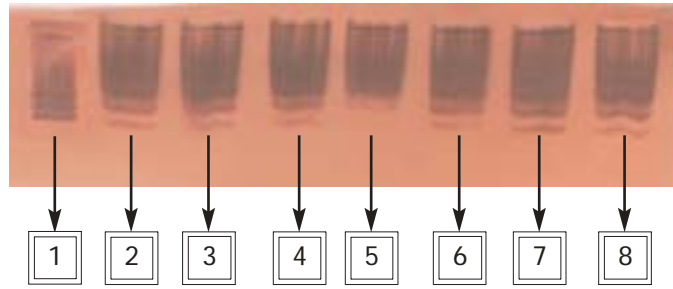
- Data are means ± S.D. of ten rats in each group.

- a, b and c are improvement percentages of groups 4, 5 and 6, respectively.

- Analysis of data is carried out by one-way (ANOVA) (analysis of variance) accompanied by post hoc (SPSS Computer Program).

- Significant level at p<0.0001.

Figure 1 : Electrophoretic separation pattern of LDH isoenzymes in liver of rats.



- 1. Standard (heart).
- 2. Normal healthy control.
- 3. 12 weeks ethanol.
- 4. 2 weeks ethanol + 2 weeks withdrawal.
- 5. 12 weeks ethanol + carnosine.
- 6. 2 weeks carnosine + 12 weeks ethanol.
- 7. 12 weeks ethanol + 2 weeks carnosine.
- 8. 12 weeks carnosine.

The % improvement in the three carnosine-treated-intoxicated groups: 12 weeks, 2 weeks prophylactic and 2 weeks after withdrawal from the intoxicated animals presented unidirectional gradual step-wise rise in a successive manner (Tables 1, 2, and 3).

DISCUSSION

The present chronic ethanol toxicity study recorded significant decrease in hepatic SDH, LDH, ALP, AST, ALT (Table 1), glycogen phosphorylase and G-6-Pase (Table 3) activities. These decreased activities were in accor-

Table 2: Effect of ethanol and carnosine on lactate dehydrogenase isoenzymes in liver of rats.

Isoenzymes	Control	Ethanol		Ethanol + Carnosine			Carnosine	Improvement %		
	Group 1	Group 2	Group 3	Group 4	Group 5	Group 6	Group 7	a	b	c
LDH <sub>1</sub>	1.15 ± 0.10 (2,3,4,5)	2.54 ± 0.08 (1,3,4,5,6,7)	3.12 ± 0.37 (1,2,4,5,6,7)	1.45 ± 0.06 (1,2,3,7)	1.40 ± 0.09 (1,2,3,7)	1.30 ± 0.05 (2,3,7)	1.01 ± 0.01 (2,3,4,5,6)	94.78	99.13	107.82
LDH <sub>2</sub>	2.56 ± 0.54 (2,3,7)	6.01 ± 0.41 (1,4,6,7)	5.71 ± 0.95 (1,4,5,6,7)	5.00 ± 0.41 (1,2,3,5,6,7)	3.06 ± 0.16 (2,3,4,6,7)	2.44 ± 0.53 (2,3,4,5)	2.02 ± 0.04 (2,3,4,5)	39.45	115.23	139.45
LDH <sub>3</sub>	6.39 ± 0.99 (2,3,4,5,6,7)	13.17 ± 0.80 (1,3,4,5,6,7)	8.62 ± 0.50 (1,2,4,5,6,7)	9.64 ± 1.04 (1,2,3,5,6,7)	4.85 ± 0.40 (1,2,3,4,6,7)	3.48 ± 0.50 (1,2,3,4,5)	3.02 ± 0.39 (1,3,4,5,7)	55.24	130.20	151.64
LDH <sub>4</sub>	17.83 ± 3.89 (2,5,6,7)	17.93 ± 1.55 (5,6,7)	17.06 ± 0.86 (6,7)	17.36 ± 2.03 (5,6,7)	14.86 ± 3.03 (1,2,4,7)	13.30 ± 0.98 (1,2,3,4,7)	4.06 ± 1.37 (1,2,3,4,5,6)	3.19	17.21	25.96
LDH <sub>5</sub>	72.34 ± 2.79 (2,3,4,5,6,7)	60.35 ± 2.23 (1,3,4,5,6,7)	62.22 ± 1.16 (1,3,5,6,7)	65.97 ± 3.24 (1,2,5,6,7)	75.71 ± 2.93 (1,2,3,4,6,7)	79.75 ± 1.42 (1,2,3,4,5,7)	89.77 ± 1.64 (1,2,3,4,5,6)	7.76	21.23	26.81

- Group 1: Normal healthy control,
- Group 2: 12 weeks ethanol,
- Group 3: 12 weeks ethanol + 2 weeks withdrawal,
- Group 4: 12 weeks ethanol + carnosine,
- Group 5: 2 weeks carnosine + 12 weeks ethanol,
- Group 6: 12 weeks ethanol + 2 weeks carnosine,
- Group 7: 12 weeks carnosine.
- Data are means ± S.D. of ten rats in each group.
- a, b and c are improvement percentages of groups 4, 5 and 6, respectively.
- Analysis of data is carried out by one-way (ANOVA) (analysis of variance) accompanied by post hoc (SPSS Computer Program).
- Significant level at p<0.0001.

dance with previous researches (1,2,22,23). These lowered enzyme activities could principally be explained by the toxic actions of ethanol on proteins and on hepatocytes cellular organelles in general (24). Ethanol itself forms a toxic environment favorable to oxidative stress such as hypoxia, endotoxaemia and cytokines release (25). Ethanol also interpolating the biomembranes and expanding them increases membrane fluidity and enzyme release (26). The toxic metabolic effects of ethanol oxidation are mainly due to increased liberation of ROS, production of deleterious active acetaldehyde, increased "NADH/NAD" ratio and disturbed intracellular calcium stores (27, 28).

These toxic agents result from ethanol oxidation by alcohol and aldehyde dehydrogenases (29) and three ethanol-inducible enzymes. These include cytochrome P450 isoenzyme, CYP2E1 (30), which plays the major role in toxicity and other P450 isoenzymes that share in liberation of ROS although they are not involved in ethanol oxidation (31). The third inducible enzyme, xan-

thin oxidase is responsible for acetaldehyde metabolism and leads to more liberation of ROS, namely superoxide free radicals (30). Elevation of free cytosolic calcium by ethanol was previously proved to additionally activate xanthin oxidoreductase to xanthine oxidase direction (32).

Thus increased hepatocyte liberation of ROS causes increased lipid peroxidation and oxidative inactivation of both membranous and soluble proteins (29). The active acetaldehyde as well, could further inactivate both types of cellular proteins by forming protein-adducts (33,34). Additionally, oxidative reactions of ethanol and its product acetaldehyde increase "NADH/NAD" ratio causing shift to the left in the equilibrium of a number of oxidoreductive couples e.g. lactate-pyruvate and malate-oxalacetate that resulted in hyperlactacidaemia and depression of citric acid cycle respectively (35). The structural and functional integrity of hepatic organelles, in general, (36) and mitochondrial function in particular (37) would suffer. The increased membranous lipid peroxidation (22,38) would

Table 3: Effect of ethanol and carnosine on liver glycogen, glycogen phosphorylase and Glucose-6- Phosphatase in rat.

Enzymes	Control	Ethanol		Ethanol + Carnosine			Carnosine	Improvement %		
	Group 1	Group 2	Group 3	Group 4	Group 5	Group 6	Group 7	a	b	c
Glycogen	3.33 ± 0.31 (2,6,7)	2.61 ± 0.21 (1,4,5,6,7)	2.85 ± 0.27 (4,5,6,7)	3.65 ± 0.27 (2,3,5,6,7)	4.15 ± 0.25 (1,2,3,4)	4.33 ± 1.32 (1,2,3,4)	4.81 ± 0.39 (1,2,3,4,6)	31.23	46.24	51.56
Glycogen phosphorylase	0.83 ± 0.10 (2,3,4,5,6,7)	0.55 ± 0.06 (1,7)	0.48 ± 0.04 (1,4,5,6)	0.64 ± 0.04 (1,3,7)	0.66 ± 0.05 (1,2,3,7)	0.68 ± 0.09 (1,2,3,7)	0.47 ± 0.06 (1,2,4,5,6)	12.04	13.25	15.62
Glucose-6-phosphatase	18.11 ± 0.87 (2,4)	13.45 ± 1.42 (1,3,4,5,6,7)	18.03 ± 0.57 (2,4)	15.11 ± 0.69 (1,2,5,6,7)	17.08 ± 0.93 (2,4)	17.76 ± 1.26 (2,4)	17.38 ± 1.88 (2,4)	9.16	20.04	23.59
Total protein	106.84±11.88 (2)	87.32±11.22 (1,3,5,6,7)	103.33±7.31 (2)	95.54±10.87 (7)	103.03±12.11 (2)	103.65±10.65 (2)	109.54±5.41 (2,4)	7.693	14.70	15.28

- Group 1: Normal healthy control,
- Group 2: 12 weeks ethanol,
- Group 3: 12 weeks ethanol +2 weeks withdrawal,
- Group 4: 12 weeks ethanol + carnosine,
- Group 5: 2 weeks carnosine +12 weeks ethanol,
- Group 6: 12 weeks ethanol + 2 weeks carnosine,
- Group 7: 12 weeks carnosine.

- Enzyme units: μmol/min/mg protein. Glycogen content: mg/g tissue.
- Data are means ± S.D. of ten rats in each group.
- a, b and c are improvement percentages of groups 4, 5 and 6, respectively.
- Significant level at p<0.0001.
- Analysis of data is carried out by one-way (ANOVA) (analysis of variance) accompanied by post hoc (SPSS Computer Program).

allow redistribution of intracellular calcium (27) leading to leakage of calcium from mitochondrial stores and increasing its cytosolic level (27,39). These facts were in accordance with Addolorato *et al.* (23) stating that ethanol ingestion caused dose-dependant cell injury accompanied with decrease in ATP content and increase in free cytosolic calcium and leading to disturbed plasma membrane transport (27). Membrane damage was partly attributed to disturbed cellular energy (40).

The reflection of these derangements on different subcellular fractions was investigated by many workers. Glycolysis key enzymes and LDH activities were reported to decrease (41). Many metabolic mitochondrial insults were as well recorded; citric acid cycle pathways, NAD dehydrogenase, cytochrome b and cytochrome oxidase leading to decreased availability of ATP (22). Mitochondrial DNA is also affected by deletions and DNA-protein cross links (22). Nuclear DNA showed increased frequency of single band break (42) that supported a previous report stating that decreased protein synthesis was one of the factors in lowered enzyme activities (43). That chronic ethanol intoxication has an inhibitory effect on DNA replication and RNA transcription was previously proved (1). All these factors more or less participate in the lowered activities of the above mentioned enzymes. Individual causative mechanisms were specifically proved for each of these enzymes.

Thus the decreased SDH activity was specifically explained by the disturbed structural and functional integrity of hepatic organelles. SDH enzyme being closely linked to the inner mitochondrial membrane would suffer (37). In addition, the increased "NADH/NAD" ratio causing shift to the left in the equilibrium of the oxidoreductive couple malate-oxalacetate resulted in depression of citric acid cycle fairly contribute to SDH lowered activity (36).

The specified factors leading to LDH inhibition in chronic alcoholism were the increased "NADH/NAD" ratio causing shift to the left in the equilibrium of the oxidoreductive couple lactate-pyruvate resulting in hyperlactacidaemia (36). The extracellular release of LDH (29) could lead to liver LDH lowering. This found support the statement that chronic alcoholism caused extracellular release of hepatic LDH raising its activity in plasma (27).

Regarding to LDH isoenzyme (Table 2), LDH<sub>5</sub> presenting the main dominating subunit in the control found

support in the statement of Varley *et al.* (44) that LDH<sub>5</sub> was, normally, the dominant one in rat and Man. That LDH<sub>5</sub> contribution was decreased in the ethanol intoxicated group also matched the finding that LDH<sub>5</sub> was increased in serum in case of liver disease, even the serum total LDH activity remained within normal limits (44). The relative increased contribution of LDH<sub>1</sub>, LDH<sub>2</sub> and LDH<sub>3</sub> should be considered a false rise being at the expense of the decreased LDH<sub>5</sub>, although in some other mammalian species, e.g. cattle, they could be primarily increased in liver stressful conditions (45).

For both the decreased levels of AST, ALT, and ALP two factors were more specified, extracellular release and decreased protein synthesis. The extracellular release for the transaminases lead to their increase in serum (46). As regards ALP, the extracellular discharge was also recorded (47). Decreased protein synthesis as a cause of lowered activities of the two transaminases had long been noticed (48). The authors stated that AST and ALT activities were decreased even relative to the lowered liver protein. ALT and AST release to the blood stream was recently reported in addition to decreased synthesis (2).

The present decrease in liver glycogen, glycogen phosphorylase and G-6-Pase was in accordance with the recorded decreased liver glycogen, phosphorylase activity (49). Reduced gluconeogenesis (50) might be an additional factor causing decreased glycogen. Although Winston and Reitz, (51) recorded increased absolute values of phosphorylase, yet they proved more relative increase in the inactive b form than its active a form that could support the present reduced activity. However, the present lowered phosphorylase activity might point more to decreased glycogen synthesis as a cause of decreased glycogen content. The decrease in G-6-Pase enzyme activity was also supported by an inhibitory action of liberated acetaldehyde, the inhibition of the G-6-Pase transport protein (translocase, T<sub>1</sub>) and elevated cytosolic calcium structurally affecting the microsomes (50,52,53).

The increased activity of the hydrolytic enzyme acid phosphatase in the ethanol group was attributed to the damage in lysosomal membrane (32). This was in agreement with Salah *et al.* (54) who noticed that all lysosomal enzymes are activated in conditions characterized by increased tissue catabolism. The increase of cytosolic

calcium could contribute to more breakdown and damage of lysosomal and other cellular membranous structures (40).

The increased 5'-nucleotidase enzyme activity in the chronic alcohol group found support in a previous record that increased nucleic acid catabolism in chronic alcohol toxicity lead to its elevation as the enzyme is related to the break down of nucleic acid, especially messenger RNA (55). In spite of the records that 5'-nucleotidase in canalicular membranes was not affected by ethanol feeding (24) and that stating a significant inhibition of 5'-nucleotidase in liver plasma membrane after ethanol toxicity (56), yet one can state that the enzyme in these sites might have been affected by extracellular discharge through the damaged cell membranes.

Concerning protein concentration, Doyle *et al.* (57) supported the present decreased result. They proved it to inhibition of hepatic protein secretion by ethanol that was associated with accelerated catabolism of unsecreted plasma proteins suggesting hepatocellular degradative processes that are usually responsive to the change in the levels of prosecretory protein and/or perturbation of the secretory process. The same harmful lowering effect of ethanol ingestion was proved to be reflected on other liver parameters; on urea (58-60), on protein and albumin/globulin ratio (1). Wickramasinghe *et al.* (61) also found reduction in serum albumin in alcohol toxicity. The lowering of serum albumin level had also been supported by Troitskii *et al.* (62) demonstrating the modification of rat serum albumin that was attributed to switch to J-fetoprotein during chronic and acute alcoholism. Donohue *et al.* (58) reported that there was 50% degradation in total plasma protein and a 46% increase in albumin catabolism where the reduction was more severe with malnutrition. In addition, Dinarello (63) stated that the acute phase response caused decreased hepatic albumin synthesis.

Carnosine administration either with, before or after ethanol ingestion showed amelioration in all the measured parameters according to the way and the period of administration. However administration of carnosine after intoxication with ethanol recorded the more potent effect. This amelioration might be due to the proved universal buffer action of carnosine combating many stressful conditions. The dipeptide scavenged ROS and protected protein modification mediated by peroxy radicals generated in

the lipid peroxidation (64). Carnosine administration also stimulated glycolysis during both anoxia and hyperthermic stress (65,66). Moreover, carnosine normalized adenylate energy charge and increased hepatocyte glycogen (7, 9) and blood glucose level in stressed animals (67). Le Blank and Saucy (68) recorded significant increase in serum insulin concentration after carnosine administration, a fact that could promote glucose utilization and glycogen storage. In addition, carnosine improving the present tested liver parameters may be comparable to carnosine protective effect on the parenchymatous gastric glands in chronic alcoholism (69).

The stimulation of protein synthesis in healthy carnosine group may be related to a protein promoting action of carnosine. Hipkiss and Chana (70) proved the ability of carnosine to protect the already formed proteins against inactivation. Kang *et al.* (5, 69) suggested that carnosine acts as a peroxy radical scavenger to protect protein modification. Carnosine also plays a role in the disposal of glycosylated protein in the affected tissue and decreases protein denaturation (71).

## CONCLUSIONS

Carnosine treatment successfully ameliorated the toxic effect of ethanol on the glycolytic, citric acid, glycogenolytic as well as the enzymes responsible for amino acid, hydrolytic enzymes and nucleic acid catabolic enzyme by variable degrees according to the way and the period of administration.

## ACKNOWLEDGEMENTS

This study was supported by National Research Center, Department of Medicinal Chemistry, Cairo, Egypt.

## REFERENCES

1. Devaki T, Venmadhi S, Govindaraju P : Alterations in protein metabolism in ethanol-ingested rats treated with garlic oil. *Med Sci Res*, 20:725-727, 1992.
2. Ozaras R, Tahan V, Aydin S, Uzun H, Kaya S, Senturk H : N-acetylcysteine attenuates alcohol-induced oxidative stress in rats. *World J Gastroenterol*, 9:791-794, 2003.
3. Sadzadeh SM, Nanji AA, Meydani M : Effect of chronic ethanol feeding on plasma in normal and vitamin E-deficient rats. Relationship to lipid peroxidation. *Biochem Pharmacol*, 47:2005-2010, 1994.

4. Jackson MC, lenney JF : *The distribution of carnosine and related dipeptides in rat and human tissues. Inflamm Res*, 45:132-135, 1996.
5. Kang JH, Kim KS, Choi SY, Kwon HY, Won MH, Kand TC : *Protective effects of carnosine and homocarnosine and anserine against peroxy radical-mediated Cu, Zn-superoxide dismutase modification. Biochim Biophys Acta*, 1570:89-96, 2002.
6. Nagasawa T, Tonejkura T, Nishizawa N, Kitts DD : *In vivo and in vitro inhibition of muscle lipid and protein oxidation by carnosine. Mol Cell Biochem*, 2001:29-34225.
7. Soliman KM, El-Ansary AK, Mohamed AM : *Effect of carnosine administration on certain metabolic parameters in bilharzial infected hamsters. Comp Biochem Biophys*, 129, 157-164, 2001.
8. Chen Y, Ho CT : *Effect of carnosine on volatile generation from Maillard reaction of ribose and cystine. J Agric Food Chem*, 50:2372-2376, 2002.
9. Soliman KM, Abdel Aziz M, Nassar YH, Abdel- Sattar S, El- Ansary A : *Effects of carnosine on bilharzial infestation in hamsters: biochemical and histochemical studies. Comp Biochem Physiol*, 131: 535-542, 2002.
10. Gil- Martin E, Calvo P, Fernandez- Briera A : *Chronic alcoholization in rats by free- choice ingestion of a hydroalcoholic solution. Food Chem Toxicol*, 36:941-946, 1998.
11. Shelton E, Rice ME: *Comparison of the reduction of two tetrazolium salts with succinoxidase activity of tissue homogenates. J Nat Cancer Inst*, 18:117-125, 1957.
12. Babson AL, Babson SR : *Kinetic colorimetric measurement of serum lactate dehydrogenase activity. Clin Chem*, 19:766-769, 1973.
13. Dietz AA, Lubrano T : *Separation and quantitation of lactic dehydrogenase isoenzymes by disc electrophoresis. Anal Biochem*, 20:246-257, 1967.
14. Swanson MA : *Glucose -6- phosphatase from liver. In Methods in Enzymology. Academic press, NY, pp 541-543, 1955.*
15. Hedrick JL, Fischer EH : *On the role of pyridoxal 5 phosphate in phosphorylase, absence of classical vitamin B<sub>6</sub> dependent enzymatic activities in muscle glycogen phosphorylase. Biochemistry*, 4:1327-1347, 1965.
16. Wattiaux R, De Duve C : *Release of bound hydrolase by means of Triton X-100. Biochem J*, 63:606-608, 1956.
17. Bodansiky O, Schwartz MK : *Comparative effects of L-histidine on the activities of 5- nucleotidase and alkaline phosphatase. J Biol Chem*, 238:3420-3427, 1963.
18. Kind PR, King EJ : *Estimation of plasma phosphatase by determination of hydrolysed phenol with amino antipyrine. J Clin Pathol*, 7:322-326, 1954.
19. Reitman S, Frankel S : *Colorimetric method for the determination of serum glutamic oxaloacetic and glutamic pyruvic transaminases. Am J Clin Pathol*, 28:56-63, 1957.
20. Bradford MM : *A rapid and sensitive method for the quantitation of microgram quantities of protein utilizing the principle of protein-dye binding. Anal Biochem*, 72:248-254, 1976.
21. Nicholas V, Carroll B, Longley W, Joseph HR : *The determination of glycogen in liver and muscle by the use of anthrone reagent. J Biol Chem*, 220:583-593, 1956.
22. Cahill A, Wang X, Hoek JB : *Increased oxidative damage to mitochondrial DNA following chronic ethanol consumption. Biochem Biophys Res Commun*, 235:286-290, 1997.
23. Addolorato G, Di-Campelli C, Simoncini M, Pasini P, Nardo B, Cavallari A, Pola P, Roda A, Gasbarrini G, Gasbarrini A : *Oxygen free radicals production in rat liver: dose related effect of ethanol on reperfusion injury. Dig Dis Sci*, 46:1057-1066, 2001.
24. Iles NK, Nagy LE : *Chronic ethanol feeding increases the quantity of G alpha s-protein in rat liver plasma membranes. Hepatology*, 21:1154-1160, 1995.
25. Bautista AP, Spitzer J : *Role of Kupffer cells in the ethanol induced oxidative stress in the liver. Frontiers in Bioscience*, 4:589-595, 1999.
26. Strubelt O, Deters M, Pentz R, Siegers CP, Younes M : *The toxic and metabolic effects of 23 aliphatic alcohols in the isolated perfused rat liver. Toxicol Sci*, 49:133-142, 1999.
27. Gasbarrini A, Borle AB, Caraceni P, Colantoni A, Farghali H, Bernardi M, Van Thiel DH : *Effect of ethanol on adenosine triphosphate, cytosolic free calcium and cell injury in rat hepatocytes. Time course and effect of nutritional status. Dig Dis Sci*, 41:2204-2212, 1996.
28. Lieber CS : *Hepatic metabolic and nutritional disorders of alcoholism: From pathogenesis to therapy. Criticism Rev Clin Lab Sci*, 37:551-584, 2000.
29. Mantle D, Preedy VR : *Free radical as mediators of alcohol toxicity. Adverse Drug Reactions and Toxicology Review*, 18:235-252, 1999.
30. Zima T, Fialova L, Mestek O, Stipek S, Mikulikova I, Popov P : *Oxidative stress metabolism of alcohol and alcohol related diseases. J Biomed Sci*, 8:59-70, 2001.
31. Niemela O : *Distribution of ethanol-induced protein adducts in vivo: Relationship to tissue injury. Free Radic Biol Med*, 15:1533-1538, 2001.
32. Mc Cord J : *Oxygen-derived free radicals in post ischemic tissue injury. N Engl J Med*, 312:159-163, 1985.
33. French SW : *Intragastric infusion model for cellular molecular studies of ethanol liver disease. J Biomed Sci*, 8:20-27, 2001.
34. Hipkiss AR, Brownson C, Mariana F, Ruiz E, Ferro A : *Reaction of carnosine with aged protein: another protective process. Ann NY Acad*, 959: 285- 294, 2002.
35. Volpi E, Lucidi P, Cruciani C, Monacchia F, Reoldi G, Brunetti P, Bolli GB, De Feo P : *Nicotinamide counteracts alcohol induced impairment of hepatic protein metabolism in humans. J Nut*, 127:2199-2204, 1997.



36. Van Noorden CJ, Frederiks WM : Enzyme Histochemical Method. In *Enzymes Histochemistry*. Oxford University Press, Amsterdam, pp 79-85, 1992.
37. Marcinkeviciute A, Mildaziene V, Crumm S, Demin O, Hoek JB, Kholodenko B : Kinetics and control of oxidative phosphorylation in rat liver mitochondria after chronic ethanol feeding. *Biochem J*, 349:519-526, 2000.
38. Lieber CS : Role of oxidative stress and antioxidant therapy in alcoholic and non-alcoholic liver diseases. *Adv Pharmacol*, 38:601-628, 1997.
39. Farber JL, Chien KR, Mitnacht S : The pathogenesis of irreversible cell injury in ischemia. *Am J Pathol*, 102:271-281, 1981.
40. Kristensen SR : Importance of the cellular energy level for enzyme release induced by direct membrane damage. *Enzyme*, 43: 33-46, 1990.
41. Adolorato G, Capristo E, Grieco A, Stefanini GF, Gasbarrini G : Influence of chronic alcohol abuse on body weight and energy metabolism: Is excess consumption a risk factor for obesity or malnutrition? *Intern Med*, 244:387-395, 1998.
42. Navasumrit P, Ward TH, Dodd NJ, O'Conner PJ : Ethanol induced free radicals and hepatic DNA strand breaks are prevented in vivo by antioxidants: effects of acute and chronic ethanol exposure. *Carcinogenesis*, 21:93-99, 2000.
43. De Feo P, Volpi E, Lucidi P, Cruciani G, Monacchia F, Roboldi G, Santeusano F, Bolli GB, Brunetti P : Ethanol impairs post-prandial hepatic protein metabolism. *J Clin Invest*, 95:1472-1479, 1995.
44. Varley H, Gowenlock AH, Bell M : General topics and commoner tests. In *Practical Clinical Biochemistry*. London and Tonbridge, Willima Heinemann Medical Books LTD, White Friars Press, London, pp 721-723, 1980.
45. Maly IP, Toranelli M : Ultrathin-layer zone electrophoresis of lactate dehydrogenase isoenzymes in microdissected liver samples. *Anal Biochem*, 214:379-388, 1993.
46. Ozcan A, Mengi A : Effect of oral ethanol treatment on the gamma-GT, ALT and AST enzyme activities in the serum, liver and kidneys and on some total cholesterol and lipid levels in rats. *Turk Veterinerlik-ve-Hayvancılık-Dergisi*, 22:181-185, 1998.
47. Ishii H, Kurose J, Kato S : Pathogenic of alcoholic liver disease with particular emphasis on oxidative stress. *J Gastroenterol Hepatol*, 12:272-282, 1997.
48. Waldorf M, Harper AE : Metabolic adaptation in higher animals. VIII. Effect of diet on ornithine- $\alpha$ -ketoglutarate ransaminase. *PSEBM*, 112:955-958, 1963.
49. Van Horn CG, Ivester P, Cunningham CC : Chronic ethanol consumption and glycogen synthesis. *Arch Biochem Biophys*, 392:145-152, 2001.
50. Brecher AS, Lehti MD : A hypothesis linking hypoglycemia, lactic acidemia, and reduced gluconeogenesis in alcoholics to inactivation of glucose-6-phosphatase by acetaldehyde. *Alcohol*, 13:553, 557, 1996.
51. Winston GW, Reitz RC : Chronic ethanol ingestion and glycogen metabolism in male and female rats. *Adv Exp Med Biol*, 132:569-577, 1980.
52. Scott HM, Burchell A : Pentamidine activates T<sub>1</sub>, the hepatic microsomal glucose-6- phosphatase transport protein of glucose-6- phosphatase system. *Biochem Biophys Acta*, 1079:31-36, 1991.
53. Exton JH : Regulation of carbohydrate metabolism by cyclic nucleotides: In: *Cyclic Nucleotides. II hand book of experimental pharmacology*. Ed by JW Kehaliam, JA Nathasan. Springer-Verlag, Berlin and Heidelberg, pp 3-88, 1982.
54. Salah LA, Kheireldin AA, Mansour MM, Hussein F : Levels of some serum enzymes in patients with schistosomiasis. *Am J Trop Med Hyg*, 79:270-274, 1976.
55. Deaciuc IV, D'Souza NB, Lang CH, Spitzer JJ : Effects of acute alcohol intoxication on gluconeogenesis and its hormonal responsiveness in isolated perfused rat liver. *Biochem Pharmacol*, 44, 1617-1624, 1992.
56. Srivastava SC : In vivo effect of di-n-butyltin dichloride on some enzymes a lipids of rat liver plasma membrane. *Toxicol Lett*, 52:287-291, 1990.
57. Doyle KM, Bird DA, Al-Salihi S, Hallag Y, Cluette-Brown JE, Goss KA, Laposata M : Fatty acid ethyl esters are present in human serum after ethanol ingestion. *J Lipid Res*, 35:428-437, 1994.
58. Donohue TM, Chaisson ML, Zetterman RK : Plasma protein catabolism in ethanol and colchicine-treated liver slices. *Alcohol Clin Exp Res*, 15:7-12, 1991.
59. Yoshiro M, Akira T, Shujiro T, Hiroyuki S : Accumulation of glycoprotein in the Golgi apparatus of hepatocytes in alcoholic liver injuries. *Am J Gastroenterol*, 86:854-860, 1991.
60. Yoshiro M, Akira T, Shujiro T, Hiroyuki S : Effect of ethanol on the secretion of hepatic secretory protein in rat alcoholic liver injury. *Alcohol*, 43:3-7, 1991.
61. Wickramasinghe SN, Hasan R : In vivo effect of vitamin C on cytotoxicity of post-ethanol serum. *Biochem Pharmacol*, 48:621-624, 1994.
62. Troitskii GV, Zagoruul KO, Fisik EG : Modification of rat blood serum albumin during chronic and acute alcohol intoxication. *Dokl-Akad. Nauk Ukr*, 12:112-140, 1991.
63. Dinarello CA : The Acute-phase response. In *Cecil Text Book of Medicine*. Ed by L Goldman, A Bennett. Aunders Comp, Philadelphia, pp 1567-1569, 2000.
64. Kang JH, Kim KS, Choi SY, Kwon HY, Won MH, Kang TC : Carnosine and related dipeptides protect human ceruloplasmin against peroxy radical-mediated modification. *Mol Cells*, 13: 498-502, 2002.
65. Churchil TA, Green CJ, Fullar BJ : Stimulation of glycolysis by histidine buffer in mammalian liver during cold anoxia. *Arch Biochem Biophys*, 320:43-50, 1995.

66. Deev LI, Geronsharenko EN, Baizhumanov AA, Akhayala MY, Antonova SV, Shestakova SV : Protective effect of carnosine in hyperthermia. *Bull Exp Biol Med*, 7:665-667, 1997.

67. Yamano T, Nijjima A, Iimori S, Tsuruoka N, Kiso Y, Nagai K : Effect of L- carnosine on the hyperglycemia caused by 69. Cho CH, Hui WM, Chen BB, Luk CT, Lam SK: Cytoprotective effect of zinc L-carnosine on ethanol-induced gastric gland damage in rabbits. *J Pharm Pharmacol*, 44:364-365, 1992.

68. Le Blanc J, Soucy J : Effects of carnosine on insulin and glucagons secretion in the dog. *Nutri Res*, 14:1655-1660, 1994.

69. Cho CH, Hui WM, Chen BB, Luk CT, Lam SK : Cytoprotective effect of zinc L- carnosine on ethanol induced gastric gland damage in rabbits. *J Pharm Pharmacol*, 44:364-365, 1992.

70. Hipkiss AR, Chana SA : Carnosine protects proteins against methyl glycosyl-mediated modification. *Biochem Biophys Res Commun*, 248:28-32, 1998.

71. Yeargans GS, Seidler NW : Carnosine promotes the heat denaturation of glycated protein. *Biochem Biophys Res Commun*, 300: 75-80, 2003.

Correspondence:

Manal Abdel Aziz Hamed

National Research Center,

Medicinal Chemistry Department,

Dokki, Cairo, EGYPT.

e-mail: manal\_hamed@yahoo.com